



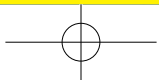
杭州易洋消防科技有限公司

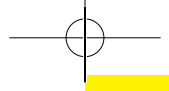
# SAINTSEA TRADING

Since 2000

CATALOG

[WWW.SAINTSEA.COM](http://WWW.SAINTSEA.COM)





**GLOBAL  
SUPPLIER**

**AND**

**GLOBAL  
PROVIDER**

**SINCE 2000**



# SAINTSEA GROUP

High-end Fire-fighting  
Solutions Provider

Founded in 2000, Saint-Sea Group delivers a full range of firefighting products certified to CE, EN3, NF, BSI, UL, DOT and CCC etc, along with one-stop solution. The enterprise focuses on technological innovation, is committed to environmental protection and cost reduction, collaborates with high-quality global partners, and continuously optimizes the fire safety service experience.





# contents

<b>Valves</b> .....	<b>08</b>
<b>Branchpipes / Nozzles</b> .....	<b>16</b>
<b>Couplings</b> .....	<b>30</b>
<b>Landing Valves</b> .....	<b>37</b>
<b>Fire Hydrant Valves</b> .....	<b>39</b>
<b>Ball Valves</b> .....	<b>44</b>
<b>Breeching Inlets</b> .....	<b>46</b>
<b>Hydrants</b> .....	<b>49</b>
<b>Foam Generators</b> .....	<b>55</b>
<b>Fire Hoses</b> .....	<b>56</b>
<b>Accessories</b> .....	<b>57</b>
<b>Pressure Gauges</b> .....	<b>58</b>
<b>Spray Hoses/Horns</b> .....	<b>59</b>
<b>Dip Tubes/ Neckrings</b> .....	<b>61</b>
<b>Brackets</b> .....	<b>62</b>
<b>Extinguisher Box / Fire Blankets</b> .....	<b>63</b>
<b>more accessories</b> .....	<b>64</b>
<b>Other produts</b> .....	<b>67</b>
<b>Detectors</b> .....	<b>69</b>
<b>Emergency lights</b> .....	<b>70</b>
<b>Smart Building Technology</b> .....	<b>74</b>
<b>Stainless Steel Pipe fittings</b> .....	<b>77</b>
<b>Sprinklers</b> .....	<b>78</b>
<b>Alarms/Signs</b> .....	<b>79</b>
<b>Bladder Tank/Fire Fighting Agents</b> .....	<b>80</b>



### SA02-101-09/11

	SA02-101-09	SA02-101-11
<b>Inlet Thread</b>	M30*1.5	M30*1.5
<b>Outlet Thread</b>	1/8" BSP	1/8" BSP
<b>Dip Tube Thread</b>	M16*1.5	M16*1.5
<b>Gauge Thread</b>	M10*1	1/8" NPT
<b>Refilling Device</b>	Yes	No
<b>Safety Device</b>	2.1-2.6Mpa	2.1-2.6Mpa



### SA02-101-16/16A

	SA02-101-16	SA02-101-16A
<b>Inlet Thread</b>	M30*1.5	M30*1.5
<b>Outlet Thread</b>	1/4" BSP	1/8" NPT
<b>Dip Tube Thread</b>	M16*1.5	M16*1.5
<b>Gauge Thread</b>	M10*1	M10*1
<b>Refilling Device</b>	No	Yes
<b>Safety Device</b>	No	No



### SA02-103-08/09

	SA02-103-08	SA02-103-09
<b>Inlet Thread</b>	M30*1.5	M30*1.5
<b>Outlet Thread</b>	1/4" BSP	1/4" BSP
<b>Dip Tube Thread</b>	M16*1.5	M16*1.5
<b>Gauge Thread</b>	1/8" NPT	M10*1
<b>Refilling Device</b>	No	Yes
<b>Safety Device</b>	2.1-2.6Mpa	2.1-2.6Mpa



### SA02-103-01/02



	SA02-103-01	SA02-103-02
<b>Inlet Thread</b>	M30*1.5	M30*1.5
<b>Outlet Thread</b>	1/4" BSP	1/4" BSP
<b>Dip Tube Thread</b>	M16*1.5	M16*1.5
<b>Gauge Thread</b>	M10*1	1/8" NPT
<b>Refilling Device</b>	No	No
<b>Safety Device</b>	2.1-2.6Mpa	No



### SA02-103-03/04



	SA02-103-03	SA02-103-04
<b>Inlet Thread</b>	M30*1.5	M30*1.5
<b>Outlet Thread</b>	1/4" BSP	1/4" BSP
<b>Dip Tube Thread</b>	M16*1.5	M16*1.5
<b>Gauge Thread</b>	1/8" NPT	M10*1
<b>Refilling Device</b>	No	Yes
<b>Safety Device</b>	No	No



### SA02-103S-14/14A/14B

	SA02-103S-14	SA02-103S-14A	SA02-103S-14B
<b>Inlet Thread</b>	M30*1.5	M30*1.5	M30*1.5
<b>Outlet Thread</b>	φ3.8	φ5	M14*1.5
<b>Dip Tube Thread</b>	M18*1.25	M18*1.25	M22*1.25
<b>Gauge Thread</b>	M10*1	M10*1	M10*1
<b>Refilling Device</b>	Yes	Yes	Yes
<b>Safety Device</b>	No	No	No



### SA02-106-30/30A

	SA02-106-30	SA02-106-30A
<b>Inlet Thread</b>	1-1/16"-12UNF	1-1/16"-12UNF
<b>Outlet Thread</b>	3/8"-24UNF	3/8"-24UNF
<b>Dip Tube Thread</b>	φ16	φ16
<b>Gauge Thread</b>	M10*1	1/8" NPT
<b>Refilling Device</b>	No	No
<b>Safety Device</b>	No	No



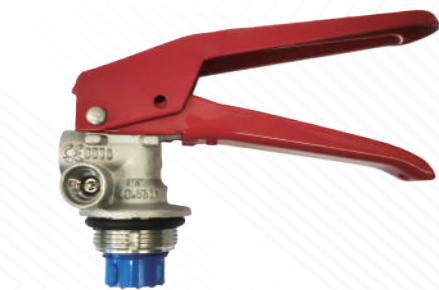
### SA02-103-40

	SA02-103-40
<b>Inlet Thread</b>	M30*1.5
<b>Outlet Thread</b>	M14*1.5
<b>Dip Tube Thread</b>	M14*1.25
<b>Gauge Thread</b>	1/8" NPT
<b>Refilling Device</b>	No
<b>Safety Device</b>	No



### SA02-103-12/12A

	SA02-103-12	SA02-103-12A
<b>Inlet Thread</b>	M30*1.5	M30*1.5
<b>Outlet Thread</b>	1/4" BSP	1/4" BSP
<b>Dip Tube Thread</b>	M16*1.5	M16*1.5
<b>Gauge Thread</b>	M10*1	1/8" NPT
<b>Refilling Device</b>	Yes	No
<b>Safety Device</b>	2.1-2.6Mpa	2.1-2.6Mpa



SA02-103-14/15



	SA02-103-14	SA02-103-15
Inlet Thread	M30*1.5	M30*1.5
Outlet Thread	1/4" BSP	1/4" BSP
Dip Tube Thread	M16*1.5	M16*1.5
Gauge Thread	1/8" NPT	M10*1
Refilling Device	No	Yes
Safety Device	2.1-2.6Mpa	2.1-2.6Mpa

SA02-103-17/18



	SA02-103-17	SA02-103-18
Inlet Thread	M30*1.5	M30*1.5
Outlet Thread	1/4" BSP	1/4" BSP
Dip Tube Thread	M16*1.5	M16*1.5
Gauge Thread	M10*1	1/8" NPT
Refilling Device	Yes	No
Safety Device	2.1-2.6Mpa	2.1-2.6Mpa

SA02-103-23/24/25

	SA02-103-23	SA02-103-24	SA02-103-25
Inlet Thread	M30*1.5	M30*1.5	M30*1.5
Outlet Thread	M14*1.5	9/16-18UN	M14*1.5
Dip Tube Thread	M16*1.5	M16*1.5	M16*1.5
Gauge Thread	M10*1	M10*1	M10*1
Refilling Device	No	No	No
Safety Device	No	No	No



SA02-104-12/12A

	SA02-104-12	SA02-104-12A
Inlet Thread	M30*1.5	M30*1.5
Outlet Thread	M18*1.5	M18*1.5
Dip Tube Thread	M22*1.5	M22*1.5
Gauge Thread	M10*1	M10*1
Refilling Device	No	Yes
Safety Device	No	No

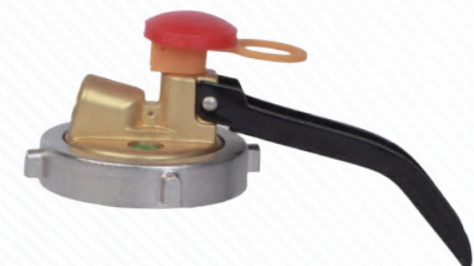
SA02-103-19/21



	SA02-103-19	SA02-103-21
Inlet Thread	M30*1.5	M30*1.5
Outlet Thread	M14*1.5	M14*1.5
Dip Tube Thread	M16*1.5	M16*1.5
Gauge Thread	M10*1	1/8" NPT
Refilling Device	Yes	Yes
Safety Device	No	No

SA02-103-44/44A

	SA02-103-44	SA02-103-44A
Inlet Thread	M52*1.5	M52*1.5
Outlet Thread	M18*1.5	1" BSP
Dip Tube Thread	M22*1.5	M22*1.5
Gauge Thread	M10*1	M10*1
Refilling Device	Yes	Yes
Safety Device	No	No



SA02-104-07/08/09/10



	SA02-104-07	SA02-104-08	SA02-104-09	SA02-104-10
Inlet Thread	2"BSP	2"BSP	2"BSP	2"BSP
Outlet Thread	1/2"BSP	1/2"BSP	1/2"BSP	1/2"BSP
Dip Tube Thread	3/4"BSP	3/4"BSP	M22*1.5	M24*1.5
Gauge Thread	1/8"NPT	M10*1	M10*1	1/8"NPT
Refilling Device	No	Yes	No	No
Safety Device	2.1-2.6Mpa	2.1-2.6Mpa	2.1-2.6Mpa	2.1-2.6Mpa

SA02-104-11/11A



	SA02-104-11	SA02-104-11A
Inlet Thread	M45*1.5	M45*1.5
Outlet Thread	M14*1.5	M14*1.5
Dip Tube Thread	M16*1.5	M16*1.5
Gauge Thread	M10*1	1/8" NPT
Refilling Device	Yes	No
Safety Device	2.1-2.6Mpa	2.1-2.6Mpa

SA02-304-02/02A



	SA02-304-02	SA02-304-02A
Inlet Thread	M74*2	M74*2
Outlet Thread	M16*1.5	1/4"BSP
Dip Tube Thread	M16*1.5	M16*1.5
Gauge Thread	M18*1.5	M18*1.5
Refilling Device	No	No
Safety Device	2.2-2.8Mpa	2.2-2.8Mpa



SA02-104-01/03/04/06



	SA02-104-01	SA02-104-03	SA02-104-04	SA02-104-06
Inlet Thread	1"BSP	1"BSP	1"BSP	1"BSP
Outlet Thread	1/2"BSP	1/2"BSP	1/2"BSP	1/2"BSP
Dip Tube Thread	M24*1.5	M24*1.5	1/2"BSP	1/2"BSP
Gauge Thread	1/8"NPT	M10*1	1/8"NPT	M10*1
Refilling Device	No	Yes	No	Yes
Safety Device	2.1-2.6Mpa	2.1-2.6Mpa	2.1-2.6Mpa	2.1-2.6Mpa

SA02-304-01/01A



	SA02-304-01	SA02-304-01A
Inlet Thread	M74*2	M74*2
Outlet Thread	M16*1.5	1/4" BSP
Dip Tube Thread	M16*1.5	M16*1.5
Gauge Thread	M18*1.5	M18*1.5
Refilling Device	No	No
Safety Device	2.2-2.8Mpa	2.2-2.8Mpa

SA02-304-03/03A



	SA02-304-03	SA02-304-03A
Inlet Thread	M74*2	M74*2
Outlet Thread	M18*1.5	M18*1.5
Dip Tube Thread	φ8	M16*1.5
Gauge Thread	M18*1.5	M18*1.5
Refilling Device	No	No
Safety Device	2.1-2.6Mpa	2.1-2.6Mpa



### SA02-203-01/02



	SA02-203-01	SA02-203-02
<b>Inlet Thread</b>	M25*2	M25*2
<b>Outlet Thread</b>	W21.8-14	W21.8-14
<b>Dip Tube Thread</b>	1/4*BSP	M10*1
<b>Safety Device</b>	22.5Mpa+-10%	22.5Mpa+-10%

### SA02-203-18/19/20



	SA02-203-18	SA02-203-19	SA02-203-20
<b>Inlet Thread</b>	25E	25E	25E
<b>Outlet Thread</b>	W21.8-14	W21.8-14	W21.8-14
<b>Dip Tube Thread</b>	1/4*BSP	M10*1	1/8*BSP
<b>Safety Device</b>	22.5Mpa+-10%	22.5Mpa+-10%	22.5Mpa+-10%

### SA02-203-12/13



	SA02-203-12	SA02-203-13
<b>Inlet Thread</b>	M25*2	M25*2
<b>Outlet Thread</b>	W21.8-14	W21.8-14
<b>Dip Tube Thread</b>	M10*1	M10*1
<b>Safety Device</b>	22.5Mpa+-10%	19Mpa+-15Mpa



### SA02-203-17/17A/17B/17C



	SA02-203-17	SA02-203-17A	SA02-203-17B	SA02-203-17C
<b>Inlet Thread</b>	25E	25E	6*38	25E
<b>Outlet Thread</b>	W21.8-14	W21.8-14	W21.8-14	W21.8-14
<b>Dip Tube Thread</b>	M10*1	1/4*BSP	1/4*BSP	M10*0.75
<b>Safety Device</b>	22.5Mpa+-10%	18.6-21.2Mpa	18.6-21.2Mpa	24-31Mpa

### SA02-203-24



	SA02-203-24	SA02-203-24A
<b>Inlet Thread</b>	25E	25E
<b>Outlet Thread</b>	W21.8-14	W21.8-14
<b>Dip Tube Thread</b>	1/4*BSP	M10*0.75
<b>Safety Device</b>	20-24Mpa	20-24Mpa

### SA02-203-21/22



	SA02-203-21	SA02-203-22
<b>Inlet Thread</b>	25E	25E
<b>Outlet Thread</b>	W21.8-14	W21.8-14
<b>Dip Tube Thread</b>	1/4*BSP	M10*1
<b>Safety Device</b>	18-22Mpa	22.5Mpa+-10%

### SA02-104-14/14A



	SA02-104-14	SA02-104-14A
<b>Inlet Thread</b>	25E	25E
<b>Outlet Thread</b>	W21.8-14	W21.8-14
<b>Dip Tube Thread</b>	M10*1	1/8"NPT
<b>Safety Device</b>	19Mpa+-10%	19Mpa+-10%

### SA02-505-01/01A

	SA02-505-01	SA02-505-01A
<b>Inlet Thread</b>	M30*1.5	M30*1.5
<b>Outlet Thread</b>	3/8"NPT	3/8"NPT
<b>Dip Tube Thread</b>	M16*1.5	1/4" BSP
<b>Safety Device</b>	M10*1	M10*1

### SA02-503-02/02A

	SA02-503-02	SA02-503-02A
<b>Inlet Thread</b>	M30*1.5	M30*1.5
<b>Outlet Thread</b>	1/8"NPT	M10*1
<b>Temperature range</b>	68°C / 79°C 93°C / 141°C	68°C / 79°C 93°C / 141°C
<b>Refilling Device</b>	Yes	Yes



### SA02-203-14/14A



	SA02-203-14	SA02-203-14A
<b>Inlet Thread</b>	25E	25E
<b>Outlet Thread</b>	W21.8-14	W21.8-14
<b>Dip Tube Thread</b>	M10*1	1/8"NPT
<b>Safety Device</b>	18-22Mpa	18-22Mpa

### SA02-505-02/02A



	SA02-505-02	SA02-505-02A
<b>Inlet Thread</b>	25E	25E
<b>Outlet Thread</b>	W21.8-14	W21.8-14
<b>Dip Tube Thread</b>	M16*1	1/4"BSP
<b>Safety Device</b>	18-20Mpa	18-20Mpa

### SA02-203-23/23A



	SA02-203-23	SA02-203-23A
<b>Inlet Thread</b>	17E	17E
<b>Outlet Thread</b>	W21.8-14	W21.8-14
<b>Dip Tube Thread</b>	M10*1	1/4" BSP
<b>Safety Device</b>	26Mpa+-10%	26Mpa+-10%





SA02-104-05

	SA02-104-05
Inlet Thread	M38*2
Outlet Thread	1/2"BSP
Dip Tube Thread	3/4"BSP
Gauge Thread	1/8"NPT
Safety Device	No



SA02-503-01/01A

	SA02-503-01	SA02-503-01A
Inlet Thread	M30*1.5	M30*1.5
Outlet Thread	3/8"BSP	3/8"BSP
Dip Tube Thread	M16*1.5	1/4"BSP
Gauge Thread	1/8" NPT	1/8" NPT
Safety Device	2.3-2.8Mpa	2.3-2.8Mpa



SA02-503-03/03A

	SA02-503-03	SA02-503-03A
Inlet Thread	M30*1.5	M30*1.5
Outlet Thread	1/8"NPT	M10*1
Temperature range	68°C / 79°C 93°C / 141°C	68°C / 79°C 93°C / 141°C
Refilling Device	No	No



SA02-121-16/16A



	SA02-121-16	SA02-121-16A
Inlet Thread	M30*1.5	M30*1.5
Outlet Thread	1/4" BSP	1/8"NPT
Dip Tube Thread	M16*1.5	M16*1.5
Gauge Thread	M10*1	M10*1
Refilling Device	Yes	Yes
Safety Device	No	2.1-2.6Mpa
Note	Material: ALU.	Material: ALU.



SA02-123-14A/14B



	SA02-123-14A	SA02-123-14B
Inlet Thread	M30*1.5	M30*1.5
Outlet Thread	1/4" BSP	M14*1.5
Dip Tube Thread	M18*1.5	M22*1.5
Gauge Thread	M10*1	M10*1
Refilling Device	Yes	Yes
Safety Device	No	No
Note	Material: ALU.	Material: ALU.

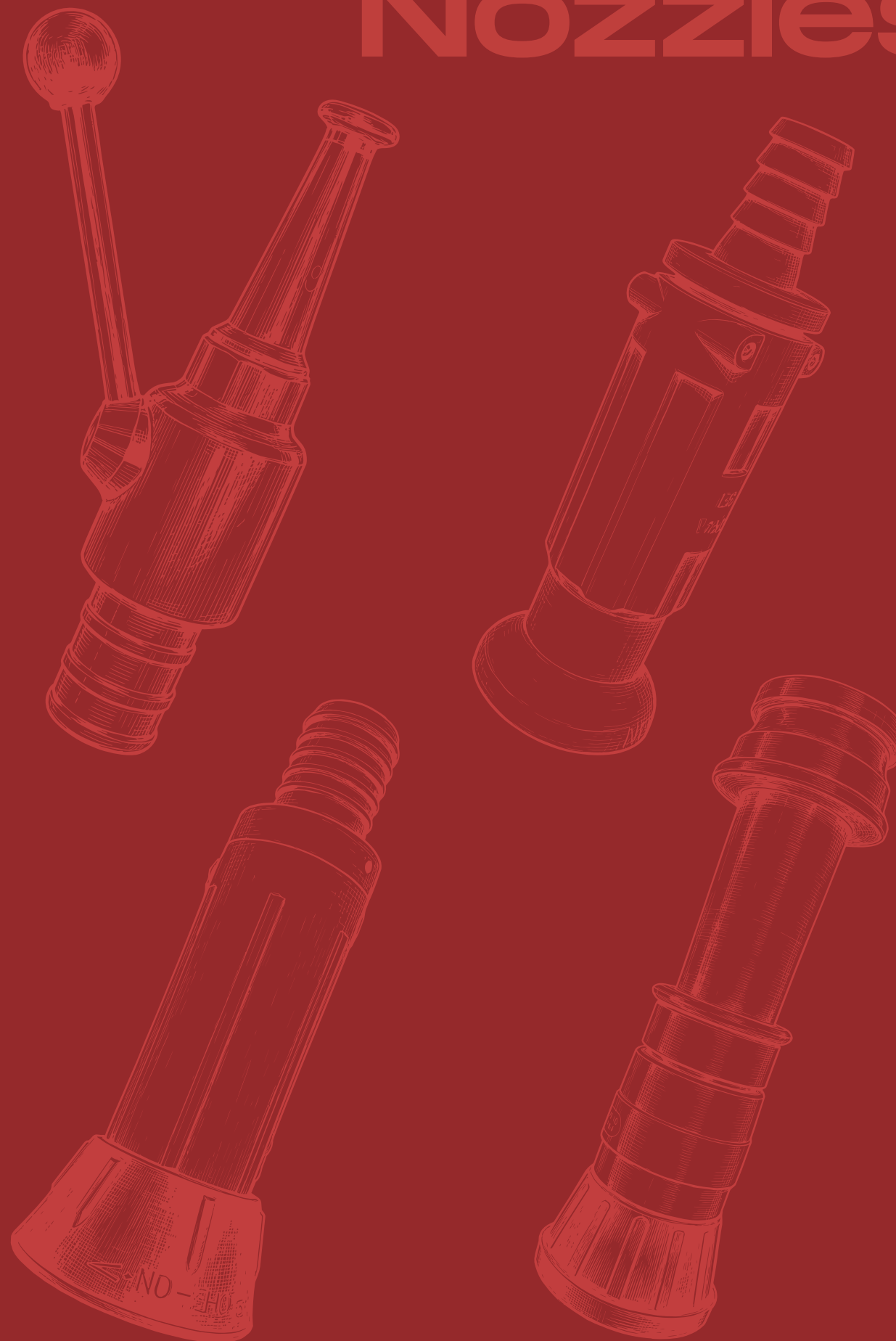


SA02-123-17/18



	SA02-123-17	SA02-123-18
Inlet Thread	M30*1.5	M30*1.5
Outlet Thread	1/4" BSP	1/4" BSP
Dip Tube Thread	M16*1.5	M16*1.5
Gauge Thread	M10*1	1/8" NPT
Refilling Device	Yes	Yes
Safety Device	2.1-2.6Mpa	No
Note	Material: ALU.	Material: ALU.

# Nozzles





SA09-200-01

Inlet	Outlet	Height	Width
3/4"	φ13	140	42
1"	φ13	140	42



SA09-200-16

Inlet	Outlet	Height	Width
3/4"	φ14	143	47
1"	φ14	143	47



SA09-301-32

Inlet	Outlet	Height	Width
3/4"	6mm	123mm	32mm
1"	8mm	123mm	32mm



SA09-202-72

Inlet	Outlet	Height	Width
3/4"	D7	110	53
1"	D7	110	53



SA09-200-14

Inlet	Outlet	Height	Width
3/4"	φ17.5	106	48
1"	φ17.5	106	48



SA09-200-15

Inlet	Outlet	Height	Width
3/4"	φ14.8	166	54
1"	φ14.8	166	54



SA09-200-03

Inlet	Outlet	Height	Width
3/4"	φ18	127	39
1"	φ18	127	39



SA09-300-02

Inlet	Outlet	Height	Width
3/4"	φ11	110	40
1"	φ11	110	40



SA09-300-05

Inlet	Outlet	Height	Width
1/2"	φ4	145	80
3/4"	φ6	145	80
1"	φ8	145	80



SA09-200-19

Inlet	Outlet	Height	Width
3/4"	D8	109	53
1"	D8	109	53



SA09-012-00

Inlet	Outlet	Height	Width
3/4"	φ16	---	---
1"	φ16	---	---



SA09-300-26

Inlet	Outlet	Height	Width
M56*4	φ9/φ12	402	150
M85*6	φ9/φ12	425	150



○ SA09-100-12

Inlet	Outlet	Height	Width
1.5"BSP	φ9	408	163
2"BSP	φ12	408	163
2.5"BSP	φ12	410	170



○ SA09-100-10

Inlet	Outlet	Height	Width
1.5"	φ9	415	150
2"	φ9	415	150
2.5"	φ9	430	150
3"	φ9	430	150



○ SA09-100-11

Inlet	Outlet	Height	Width
3/4"	φ4.2	310	110
1"	φ4.2	310	110



○ SA09-100-01

Inlet	Outlet	Height	Width
2"BSP	φ9/φ12	405	150
2.5"BSP	φ9/φ12	405	150



○ SA09-100-06

Inlet	Outlet	Height	Width
2"BSP	φ12	465	170
2.5"BSP	φ16	465	170
M85*6	φ16	465	170



○ SA09-100-07

Inlet	Outlet	Height	Width
1.5"BSP	φ9	375	150
M56*4	φ12	375	150
2"BSP	φ12	375	150
2.5"BSP	φ16	375	150



○ SA09-200-21

Inlet	Outlet	Height	Width
M56*4	φ9	291	74



○ SA09-031-00

Inlet	Outlet	Height	Width
1.5"BS336	φ9	---	---
2"BS336	φ10	---	---



○ SA09-045-00

Inlet	Outlet	Height	Width
2" STORZ	φ30	---	---



○ SA09-100-08

Inlet	Outlet	Height	Width
1.5"BSP	φ9	412	163
2"BSP	φ12	412	163
2"BSP	φ16	412	163



○ SA09-014F-00

Inlet	Outlet	Height	Width
2.5"	φ35	---	---



○ SA09-100-03 / 03A

Inlet	Outlet	Height	Width
BS336	φ20	170	85
BS336	φ25	170	85



○ SA09-088-00J

Inlet	Outlet	Height	Width
2.5"BS336	Φ20	---	---
2.5"BS336	Φ20	---	---
2.5"BS336	Φ20	---	---

○ SA09-003D-00

Inlet	Outlet	Height	Width
2.5"BS336	Φ16	---	---

○ SA09-003C-00

Inlet	Outlet	Height	Width
2.5"QLD	Φ16	---	---



○ SA09-200-17

Inlet	Outlet	Height	Width
M56*4	φ12	131	73
1.5"BSP	φ12	131	73



○ SA09-036-00

Inlet	Outlet	Height	Width
F1.5" NH	Φ20	---	---



○ SA09-300-10 / 10A

Inlet	Outlet	Height	Width
2.5"BSP	φ20	335	80
BS336	φ20	332	80



○ SA09-096-00

Inlet	Outlet	Height	Width
2"GOST	Φ13	---	---

○ SA09-090-00

Inlet	Outlet	Height	Width
2.5"Machino	Φ20	---	---
1.5"Machino	Φ13	---	---



○ SA09-200-18

Inlet	Outlet	Height	Width
1"	Φ18	140	53



○ SA09-049G-00

Inlet	Outlet	Height	Width
2.5"BSP	Φ29	---	---



○ SA09-300-01

Inlet	Outlet	Height	Width
1.5"BSP	φ21.5	132	74
1.5"NH	φ21.5	132	74



○ SA09-100-34

Inlet	Outlet	Height	Width
1.5"BSP	22	134	76
2.5"BSP	22	134	76



SA09-005-00

Inlet	Outlet	Height	Width
F1.5 "NH	Φ22	---	---
F2.5 "NH	Φ29	---	---
F1.5 "NH	Φ21.5	---	---
F1.5 "BSP	Φ21.5	---	---



SA09-059-00

Inlet	Outlet	Height	Width
2.5" BS336	Φ30.5	---	---



SA09-005Q-00

Inlet	Outlet	Height	Width
F1.5" BSP	Φ33	---	---



SA09-151-00

Inlet	Outlet	Height	Width
2.5"	Φ16	---	---
1.5"	Φ9	---	---



SA09-002C-00

Inlet	Outlet	Height	Width
2.5"BS336	Φ16	---	---
2"BS338	Φ13	---	---
1.5"BS336	Φ9	---	---



SA09-002G-00

Inlet	Outlet	Height	Width
2.5" STORZ	Φ16	---	---
2" STORZ	Φ13	---	---
1.5" STORZ	Φ9	---	---



SA09-005E-00

Inlet	Outlet	Height	Width
F1.5"BSP	Φ33	---	---



SA09-087-00

Inlet	Code
2"BSP	333550



SA09-079-00

Inlet	Code
Nakaiima 2"BSP	E 330830



SA09-056-00

Inlet	Working pressure	Effective Throw distance (m)	Jet Flow rate (1/min)	Spray Flow rate (1/min)	Standard
2"BSP	6Bar	32.4	222	576	EN15182-1
2"BSP	6Bar	35.1	326	570	EN15182-2
2"BSP	6Bar	38.7	366	588	



SA09-152A-00

Inlet	2"BSP	2.5"BS336	2"STORZ	2.5"BS336	F1.5"NH
-------	-------	-----------	---------	-----------	---------



SA09-005E7-00

Inlet	Outlet
2.5"/2"/1.5"BS336	Φ30/Φ20
2.5"/2"/1.5"Nakajima	Φ30/Φ20
2.5"/2"/1.5"NH	Φ30/Φ20
2.5"/1.5"STORZ	Φ30/Φ20
2.5"/2"/1.5"Machino	Φ30/Φ20



SA09-005M-00 / SA09-005H-00

Inlet	Working pressure	Effective Throw distance (m)	Jet Flow rate (1/min)	Spray Flow rate (1/min)	Standard
F Φ55*10TPI	6Bar	38.7	513	986	
F Φ55*10TPI	6Bar	35.1	420	980	
F Φ55*10TPI	6Bar	325	236	978	
F Φ45*12TPI	6Bar	33.3	416	762	
F Φ45*12TPI	6Bar	31.5	396	750	EN15182-1
F Φ45*12TPI	6Bar	27.9	300	738	EN15182-2
F Φ86*12TPI	6Bar	27	270	462	
F Φ36*12TPI	6Bar	27.9	258	462	
F Φ36*12TPI	6Bar	29	204	456	



SA09-005K-00



○ SA09-002D-00

Inlet	Outlet	Height	Width
F2.5" NH	Φ16	---	---
F2" NH	Φ13	---	---
F1.5" NH	Φ9	---	---



○ SA09-065-00

Inlet	Outlet	Height	Width
2.5" BS336	Φ30	---	---
2" BS338	Φ30	---	---
1.5" BS336	Φ20	---	---



○ SA09-067-00

Inlet	Outlet	Height	Width
F2.5"NH	Φ30	---	---
F1.5"NH	Φ30	---	---
F1.5"NH	Φ20	---	---



○ SA09-066-00

Inlet	Outlet	Height	Width
2.5"Nakajima	Φ30	---	---
2"Nakajima	Φ30	---	---
1.5 "Nakajima	Φ20	---	---



○ SA09-068-00

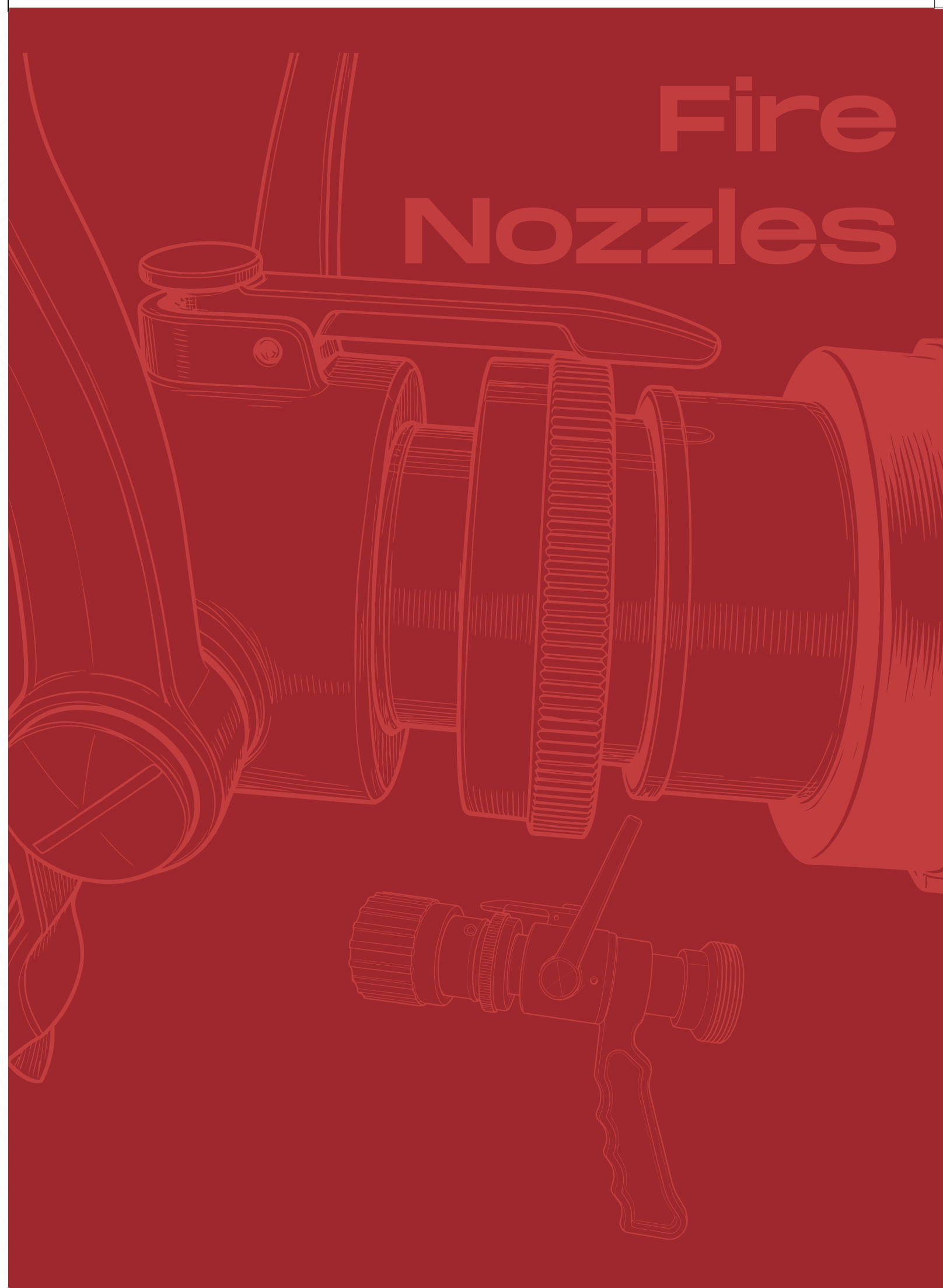
Inlet	Outlet	Height	Width
2.5"STORZ	Φ30	---	---
2"STORZ	Φ30	---	---
1.5"STORZ	Φ20	---	---



○ SA09-070-00

Inlet	Outlet	Height	Width
2.5"Machino	Φ30	---	---
2"Machino	Φ30	---	---
1.5"Machino	Φ20	---	---

# Fire Nozzles





○ SA09-509-00



Model Type	QLD6.0/4III-D
WorkingPressure	7 Bar(100PSI)
Flow Rate (LPM)	50-100-150-230-FLUSH
F.Distance	26M
Weight	1Kg
Coupling	1"/1.5"



○ SA09-509-01



Model Type	QLD6.0/8III-B
WorkingPressure	7 Bar(100PSI)
Flow Rate (LPM)	115-230-360-475-FLUSH
F.Distance	32M
Weight	1.8Kg
Coupling	1.5"/2.5"



○ SA09-509-02



Model Type	QLD6.0/4III-D
WorkingPressure	7 Bar(100PSI)
Flow Rate (LPM)	50-100-150-230-FLUSH
F.Distance	26M
Weight	1Kg
Coupling	1"/1.5"



○ SA09-509-05

Model Type	QD6.0/4III-DE
WorkingPressure	7 Bar(100PSI)
Flow Rate (LPM)	50-100-150-230-FLUSH
F.Distance	26M
Weight	1.3Kg
Coupling	1.5"/2.5"



○ SA09-509-06

Model Type	QD6.0/10III-BE
WorkingPressure	7 Bar(100PSI)
Flow Rate (LPM)	115-230-360-475-600
F.Distance	32M
Weight	2.2Kg
Coupling	1.5"/2.5"



○ SA09-509-07

Model Type	QD6.0/13III-CEI
WorkingPressure	7 Bar(100PSI)
Flow Rate (LPM)	350-450-580-780-950
F.Distance	37M
Weight	3.2Kg
Coupling	1.5"/2.5"



○ SA09-509-03



Model Type	QLD6.0/13III-C
WorkingPressure	7 Bar (100PSI)
Flow Rate (LPM)	350-450-580-780-950
F.Distance	37M
Weight	2.8Kg
Coupling	1.5"/2.5"



○ SA09-509-04



Model Type	QLD6.0/8III-B	QLD6.0/8III
WorkingPressure	7 Bar(100PSI)	7 Bar (100PSI)
Flow Rate (LPM)	115-230-360-475-FLUSH	115-230-360-475
F.Distance	32M	32M
Weight	1.8Kg	3.4Kg
Coupling	1.5"/2.5"	1.5"/2.5"



○ SA09-509-08

Model Type	QLD6.0/13III
WorkingPressure	7 Bar(100PSI)
Flow Rate (LPM)	350-450-580-780-950
F.Distance	37M
Weight	3.1Kg
Coupling	1.5"/2.5"



○ SA09-509-09

Model Type	PMG7.0/8-02	PMG7.0/16-02
Material	Nylon	Nylon
Flow Rate (LPM)	475	475
F.Distance	285*100	375*110
Weight	0.5Kg	0.6Kg
Coupling	75/50	75/50



○ SA09-509-10

Model Type	PMG7.0/8-01	PMG7.0/8-01
Material	Alloy	Alloy
Flow Rate (LPM)	475	475
F.Distance	285*100	375*110
Weight	0.9Kg	1Kg
Coupling	75/50	90/50



### SA09-509-11

Model Type	QZH6.0/500-250
WorkingPressure	7 Bar(100PSI)
FlowRate(LPM)	500
splashflow(LPM)	250
integratedflow(LPM)	750
F.Distance	38M
Weight	1.8Kg
Coupling	1.5"/2.5"



### SA09-509-12

Model Type	QZH6.0/500-250
WorkingPressure	7 Bar(100PSI)
FlowRate(LPM)	500
splashflow(LPM)	250
integratedflow(LPM)	750
F.Distance	38M
Weight	1.8Kg
Coupling	1.5"/2.5"



### SA09-509-13

Model Type	QP2/0.7Z
WorkingPressure	7 Bar(100PSI)
Flow Rate (LPM)	120
F.Distance	10M
Weight	1.5Kg
Coupling	1.5"/2.5"



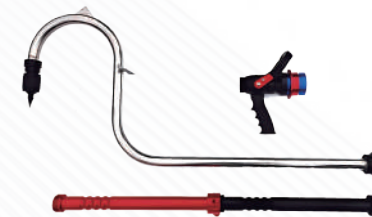
### SA09-509-14

Model Type	QP8/0.8Z	QP16/0.8Z
WorkingPressure	8Bar	8Bar
FlowRate(LPM)	475	950
F.Distance	24M	28M
FoamingRatio	6	6
Weight	3.5Kg	3.5Kg
MixingRatio	6.1	6.1
Coupling	1.5"/2.5"	1.5"/2.5"



### SA09-509-15

Model Type	QPA600
WorkingPressure	7 Bar(100PSI)
Flow Rate (LPM)	600
F.Distance	20M
Weight	1.2Kg
Coupling	1.5"/2.5"



### SA09-900-00

WorkingPressure	QDH6.0/3.51PY-65
Flow Rate(LPM)	0.7Mpa
ModelType	475
ExhaustRate	34000m2/h
Weight	5.8Kg
Coupling	1.5"/2.5"



### SA09-900-01

WorkingPressure	QCG6.0/600
Flow Rate(LPM)	0.7Mpa
ModelType	600
ExhaustRate	1M
Weight	2.4Kg
Coupling	1.5"/2.5"



### SA09-900-02

WorkingPressure	QZW6.0/165
Flow Rate(LPM)	0.7Mpa
ModelType	135
ExhaustRate	1.3M
Weight	4Kg
Coupling	1.5"/2.5"



### SA09-900-03

Model Type	QD6.0/10III-BE
WorkingPressure	7 Bar(100PSI)
Flow Rate(LPM)	475
F.Distance	29M
Weight	1.2Kg
Coupling	1.5"/2.5"



### SA09-900-04

Model Type	PHF4/14	PHF6/14	PHF8/14	PHF16/14
WorkingPressure	8Bar -14Bar	8Bar -14Bar	8Bar -14Bar	8Bar -14Bar
Foam Rate(LPM)	230	360	475	950
Coupling	1.5"/2.5"	1.5"/2.5"	1.5"/2.5"	1.5"/2.5"
FoamExpansionRatio	7	7	7	7
Mixing Ratio		0.1%-0.5%-1%-3%-6%		
Coupling	1.5"/2.5"	1.5"/2.5"	1.5"/2.5"	1.5"/2.5"



### SA09-900-05

Model Type	QCG6.0/600-
WorkingPressure	0-30Mpa
Flow Rate(LPM)	600
CombinationMethod	5
Weight	6.7Kg
Coupling	1.5"/2.5"



SA11-120-51

Inlet	Outlet	Height	Width
4" STORZ	Φ100	---	---
3" STORZ	Φ75.5	---	---



SA11-105-30

Size	Inlet	Outlet	Height	Width
DN25	19	Storz-D	53	55
DN25	25	Storz-D	53	55
DN40	38	1.5"Storz-D	80	80
DN52	51	Storz-C	65	98
DN52	51	Storz-C	90	98
DN65	65	2.5"Storz-D	65	118
DN65	65	2.5"Storz-D	95	118



SA11-105-10

Inlet	Outlet	Height	Width
1"	1"	106	55
1.5"	1.5"	165	80
2"	2"	130	98
2.5"	2.5"	189	118
3"	3"	250	126
4"	4"	340	182



SA11-110-20

Inlet	Outlet	Height	Width
DN25	1"BSP	38	φ55
DN52	2"BSP	51	φ98
DN65	2.5"BSP	51	φ118
DN75	3"BSP	55	φ126



SA11-120-20

Inlet	Outlet	Height	Width
4" STORZ	Φ100	---	---
3" STORZ	Φ75.5	---	---
2.5" STORZ	Φ65.5	---	---
2" STORZ	Φ51	---	---
1" STORZ	Φ25.4	---	---
3/4" STORZ	Φ19	---	---



SA11-110-21

Inlet	Outlet	Height	Width
DN25	1"BSP	38	φ55
DN52	2"BSP	51	φ98
DN65	2.5"BSP	51	φ118
DN75	3"BSP	55	φ126



SA11-105-07

Inlet	Outlet	Height	Width
1.5"+1.5" Storz	cover	43	80
2"+1.5" Storz	cover	55	98
2.5"+1.5" Storz	cover	49	118
3"+1.5" Storz	cover	58	126
4"+1.5" Storz	cover	60	156



SA11-110-51

Inlet	Outlet	Height	Width
2"BSP	2"	54	98
2.5"BSP	2.5"	53	118



SA11-105-01

Inlet	Outlet	Height	Width
1"BSP	1" Storz	38	φ55
1.5"BSP	1.5" Storz	45	φ80
2"BSP	2" Storz	45	φ98
2.5"BSP	2.5" Storz	50	φ118



SA11-110-51

Inlet	Outlet	Height	Width
4"STORZ	4"BSP	---	---
3"STORZ	3"BSP	---	---
2.5"STORZ	2.5"BSP	---	---
2"STORZ	2"BSP	---	---
1.5" STORZ	1.5"BSP	---	---
1" STORZ	1"BSP	---	---



SA11-011A-35B

Inlet	Outlet	Height	Width
3"STORZ	3"BSP	---	---
2.5"STORZ	2.5"BSP	---	---
2"STORZ	2"BSP	---	---
2"STORZ	1.5"BSP	---	---
1.5"STORZ	1.5"BSP	---	---



SA11-940-20

Inlet	Outlet	Height	Width
DN25	DN25	φ50	65
DN50	DN50	φ56	103
DN80	DN80	φ76	132
DN100	DN100	φ120	188



○ SA11-034A-00

Inlet	Outlet	Height	Width
2.5"	Φ63.5	---	---
2"	Φ51	---	---
1.5"	Φ38	---	---
2.5"	Φ51	---	---
2.5"	Φ38	---	---

○ SA11-024A-89-00

Inlet	Outlet	Height	Width
2.5"	---	---	---
2"	---	---	---
1.5"	---	---	---

○ SA11-024A4-00

Inlet	Outlet	Height	Width
2.5"	F2.5"BSP	---	---



○ SA11-040E-00

Inlet	Outlet	Height	Width
Φ25 (1")	Φ25	---	---
Φ50 (2")	Φ50	---	---
Φ70 (2.5")	Φ70	---	---
Φ90 (3")	Φ90	---	---
Φ100 (4")	Φ100	---	---

○ SA11-041E-00

Inlet	Outlet	Height	Width
Φ25 (1")	F1"BSP	---	---
Φ50 (2")	F2"BSP	---	---
Φ70 (2.5")	F2.5"BSP	---	---
Φ90 (3")	F3"BSP	---	---

○ SA11-025A-00

Inlet	Outlet	Height	Width
2.5"	Φ63.5	---	---
2"	Φ51	---	---
1.5"	Φ38	---	---
2.5"	Φ51	---	---
2.5"	Φ38	---	---
2"	Φ38	---	---



NEW



NEW



NEW

○ SA11-420-31

Size	Inlet	Outlet	Height	Width
1.5"	1-11/16"	1.5"NH	82	75
1.5"	1-13/16"	1.5"NH	95	75
2.5"	2-3/4"	2.5"NH	115	110
2.5"	2-7/8"	2.5"NH	120	110

○ SA11-105-08

Inlet	Outlet	Height	Width
1.5"	1.5"	91	68
2.5"	2.5"	102	97

○ SA11-007AW-00(IPT)

Inlet	Outlet	Height	Width
2.5" IPT	2 1/2"-2 3/4"	---	---
2.5" IPT	2 1/2"-2 13/16"	---	---
2.5" NH	2 1/2"-2 3/4"	---	---
2.5" NH	2 1/2"-2 13/16"	---	---
1.5" IPT	1 1/2"-1 11/16"	---	---
1.5" NH	1 1/2"-1 11/16"	---	---
2" IPT	2"-2 1/4"	---	---
2" NH	2"-2 1/4"	---	---
2" NH	2"-2 3/16"	---	---

○ SA11-105-05

Inlet	Outlet	Height	Width
1.5"BSP	BS336	75	85
2"BSP	BS336	75	85
2.5"BSP	BS336	82	85

○ SA11-105-06

Inlet	Outlet	Height	Width
2"BSP	BS336	80	130
2.5"BSP	BS336	80	130
2.5"NST	BS336	80	130

○ SA11-002D-00

Inlet	Outlet	Height	Width
2.5"NH	Φ63.5	---	---
2.5"NH	Φ51	---	---
2"NH	Φ51	---	---
1.5"NH	Φ38	---	---



SA11-105-15

Inlet	Outlet	Height	Width
2.5"BS336	Φ63.5	---	---
2"BS336	Φ51	---	---
2.5"BS336	Φ51	---	---
2.5"BS336	Φ38	---	---
2"BS336	Φ38	---	---

SA11-105-16

Inlet	Outlet	Height	Width
2.5"BS336	Φ63.5	---	---
1.5"BS336	Φ38	---	---
2.5"BS336	Φ51	---	---
2.5"BS336	Φ38	---	---
2"BS336	Φ38	---	---

SA11-042A-35A-00

Inlet	Outlet	Height	Width
Φ70 (2.5")	F2.5"BSP	---	---
50(2")	F2"BSP	---	---



SA11-105-13

Inlet	Outlet	Height	Width
1 3/4"	1 3/4"	110	65.5
2 3/4"	2 3/4"	165	100

SA11-032-00

Inlet	Outlet	Height	Width
M85X6 FEMALE	---	---	---
M56X4 FEMALE	---	---	---

SA11-004-00

Inlet	Outlet	Height	Width
UNI70	Φ70(LIGHT TYPE)	---	---
UNI70	Φ70(HEAVY TYPE)	---	---



SA11-023B-00

Inlet	Outlet	Height	Width
1.5"	1.5"BSP	---	---

SA11-023D-00

Inlet	Outlet	Height	Width
1.5"	F1.5"BSP	---	---

SA11-105-11

Inlet	Outlet	Height	Width
1 3/4"	1 3/4"	150	76
2 3/4"	2 3/4"	173	110
4"	4"	287	148.5



SA11-105-13

Inlet	Outlet	Height	Width
UNI45	Φ45(HEAVY TYPE)	---	---
UNI45	Φ45(HEAVY TYPE)	---	---
UNI45	Φ45(LIGHT TYPE)	---	---

SA11-018QT1-00

Inlet	Outlet	Height	Width
2.5"BS336	Φ63.7	---	---
2.5"BS336	Φ38.3	---	---

SA11-017A3-00A

Inlet	Outlet	Height	Width
2.5"BS336	Φ63.7	---	---
2.5"BS336	Φ38.3	---	---

# WATER SYSTEMS



○ SA12-100-02

Inlet	Outlet	Height	Width
1"BSP	1"BSP	101	95



○ SA12-100-01

Inlet	Outlet	Height	Width
1.5"BSP	1.5"BSP	121	103



○ SA12-110-01

Size	Inlet	Outlet	Height	Width
DN25	1"BSP	25mm	105	110
DN25	1"BSP	1"BSP	105	75
DN25	1"BSP	Storz-D	105	106



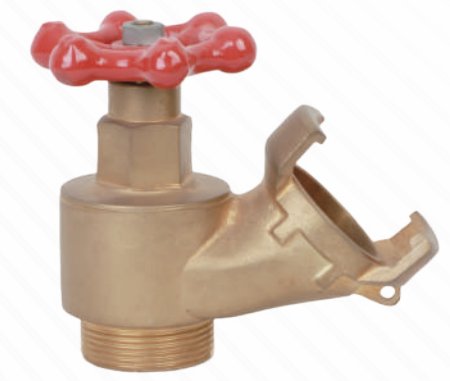
○ SA12-100-03

Inlet	Outlet	Height	Width
1.5"BSP	M56*4	135	113
2"BSP	2"BSP	165	130
2.5"BSP	2.5"BSP	188	154



○ SA12-100-04

Inlet	Outlet	Height	Width
2"BSP	2"BSP	151.5	120



○ SA12-100-17

Inlet	Outlet	Height	Width
1.5"BSP	1.5"	119	140



SA12-100-18

Inlet	Outlet	Height	Width
2"BSP	2"Storz	168	173



SA12-100-07

Inlet	Outlet	Height	Width
(Φ65)2"BS4504	2.5"BS336	---	---
(Φ65)2.5" BS4504	2.5"BS336	---	---
2.5" BSPT	2.5"BS336	---	---
DN65	2.5"BS336	---	---



SA12-008-00

Inlet	Outlet	Height	Width
(Φ65) 2" BS4504	2.5"BS336	---	---



SA12-702-01

Inlet	Outlet	Height	Width
1"BSP	1"BSP	152	86
1.5"BSP	1.5"BSP	171	91
2"BSP	2"BSP	171	91



SA12-022-00

Inlet	Outlet	Height	Width
F13/4 "BSP	13/4 "BSP	---	---



SA12-034B-00

Inlet	Outlet	Height	Width
3 "BSP	F2.5 "BS336	---	---



SA12-066AJ-00

Inlet	Outlet	Height	Width
2.5"BS4504	2.5"BSP	---	---
2.5"JIS10K	2.5"BSP	---	---
2.5"ANSI	2.5"BSP	---	---
2.5"DIN	2.5"BSP	---	---



SA12-026J-00

Inlet	Outlet	Height	Width
2"BS4504	2"BSP	---	---
2"ANSI	2"BSP	---	---
2"DIN	2"BSP	---	---
2"JIS10K	2"BSP	---	---



SA12-037J-00

Inlet	Outlet	Height	Width
2.5"BS4504	2.5"BSP	---	---
2.5"JIS10K	2.5"BSP	---	---
2.5"DIN	2.5"BSP	---	---
2.5"ANSI	2.5"BSP	---	---



SA12-032E-00

Inlet	Outlet	Height	Width
F2.5 "NPT	F2.5 "NH	---	---



SA12-190C-00

Inlet	Outlet	Height	Width
DN65	F1.5"BSP	---	---



SA12-081-00

Inlet	Outlet	Height	Width
1.5"BSPT	F 1.25"BSP	---	---



SA12-034-00

Inlet	Outlet	Height	Width
3 "BSP	F2.5 "BS336	---	---



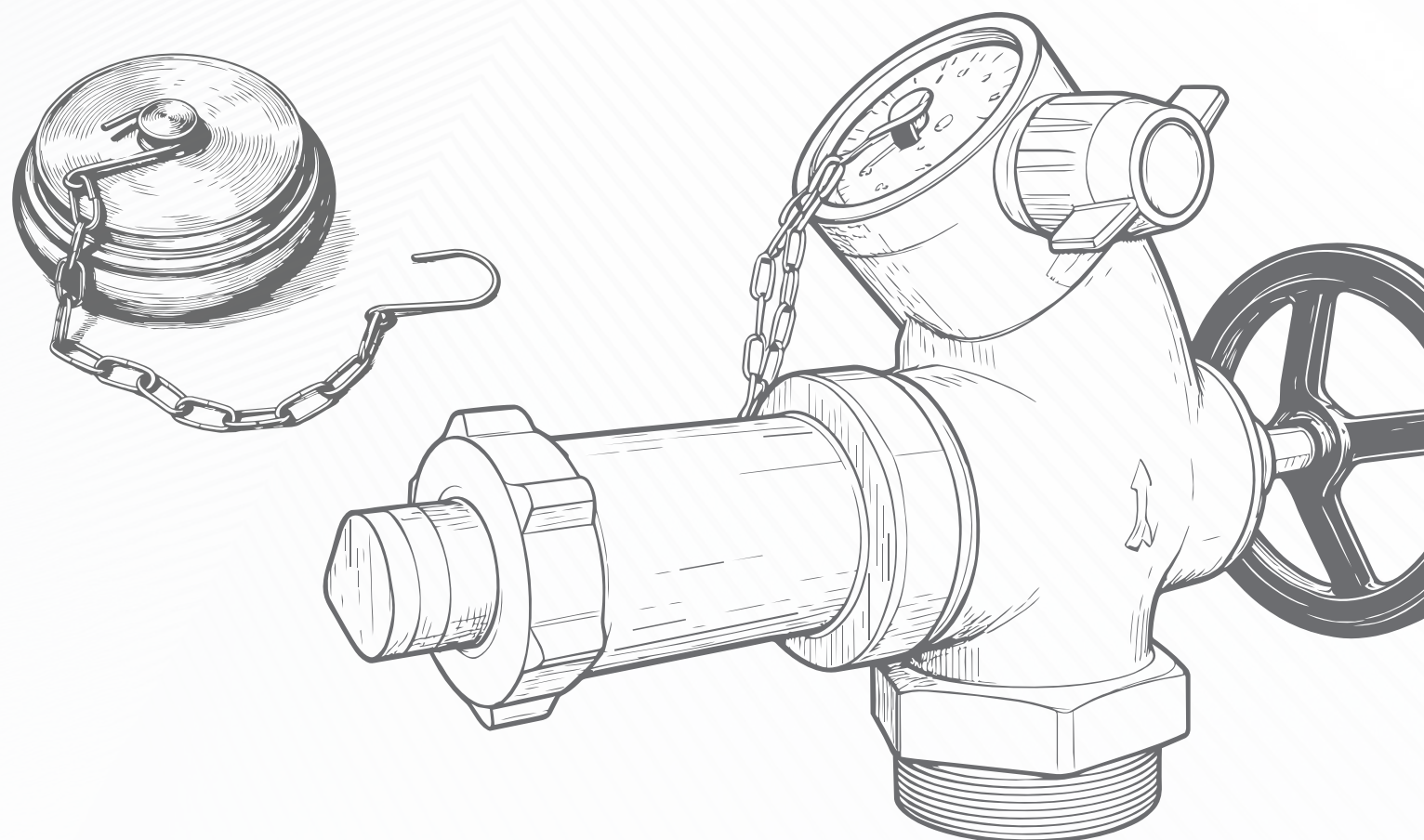
SA12-006QT-00

Inlet	Outlet	Height	Width
2.5"BS336	2.5"BSPT	---	---



SA12-047-00

Inlet	Outlet	Height	Width
1.5" BSP	F1.5"BSP	---	---



SA12-166-00

Model	Size	FlangeOD	Outlet
(7334)5K ANGLE HOSE VALVE	DN15	80	M42*2



SA12-100-09

Inlet	Outlet	Height	Width
DN65 flange	BS336	295	152



SA12-181A-00

Model	Size	Length	FlangeOD
(7303)16K	DN15	110	95
Marine	DN20	120	100
Straight	DN25	130	125
Globe	DN32	160	135
Ivalve	DN40	180	140



SA12-185A-00

Model	Size	FlangeOD
(7302)5K	DN15	80
Marine	DN20	85
Right	DN25	95
Angle	DN32	115
Global	DN40	120
Valve		



SA12-067CJ-00

Inlet	Outlet
1.5"BS4504	1.5"BSP
1.5"ANSI	1.5"BSP
1.5"JIS10K	1.5"BSP
1.5"DIN	1.5"BSP
2"BS4504	2"BSP
2"ANSI	2"BSP
2"DIN	2"BSP
2"JIS10K	2"BSP



SA12-100-12

Inlet	Outlet	Height	Width
(Φ65)2.5"BS4504	2.5" BS336	380	225
2.5" BSP	2.5" BS336	380	225
2.5" BSPT	2.5" BS336	380	225
2.5"BSPT	2.5"BS336	380	225
DN65	2.5"BSP(2.5"size)	380	225
2.5"BSPT	2.5"BS336	380	225
2"BSP	2"BSP	380	225



SA12-002A1-00



**Body Material** Gunmetal (LG2)  
**Valve Type** Bid-Nose, Globe Pattern  
**Inlet Connection** Threaded 2.5" BSPT Male  
**Outlet Connection** 2.5" Instantaneous BS 336  
**Test Pressure** >30 BAR @ 2 MINS  
**Flow Rate** >8.5 LPS @ 4.7-20 BAR  
**Standards** BS 5041-1 (1987)  
**Blank Cap** Plastic with S/S Chain  
**Weight** 9.2kg



SA12-006G2-00



**Body Material** Gunmetal (LG2)  
**Valve Type** Oblique, Globe Pattern  
**Inlet Connection** Threaded 2.5" BSPT Male  
**Outlet Connection** 2.5" Instantaneous BS 336  
**Test Pressure** >22.5 BAR2MINS  
**Flow Rate** >8.5 LPS @ 4.7 BAR  
**Standards** BS 5041-1 (1987)  
**Blank Cap** Plastic with S/S Chain  
**Weight** 4.5kg



SA12-001AV-00



**Body Material** Ductile Iron  
**Valve Type** Oblique, Globe Pattern  
**Inlet Connection** 2" 2.5" Instantaneous BS 336  
**Outlet Connection** Flanged BS 4504-2  
**Test Pressure** 20 BAR  
**Flow Rate** 10 BAR  
**Standards** BS 5041-3 (1975)  
**Blank Cap** Rubber with S/S Chain  
**Weight** 13.6kg



SA12-002QT-00



Inlet	Outlet	Height	Width
2.5"BSPT	2.5"BS336	---	---



SA12-006QT-00



Inlet	Outlet	Height	Width
2.5"BSPT	2.5"BS336	---	---



SA12-300-03

Inlet	Outlet	Height	Width
3/4"	3/4"	147	146
1"	1"	149	146



SA12-300-04

Inlet	Outlet	Height	Width
3/4"	3/4"	133	246
1"	1"	133	246



SA12-410-06

Size	Inlet	Outlet	Height	Width
3/4"	25	19	150	193
1"	25	19	150	193



SA12-300-07

Inlet	Outlet	Height	Width
2"Storz	2"Storz	177	325



SA12-746-61

Size	Inlet	Outlet	Height	Width
DN25	2"BSP	Storz-C	210	223
DN25	2"BSP	2"BSP	143	168



SA12-300-02

Inlet	Outlet	Height	Width
3/4"	3/4"	175	173
1"	1"	177	173



SA12-510-01

Size	Inlet	Outlet	Height	Width
DN25	1"BSP	1"BSP	116	52
DN40	1.5"BSP	1.5"BSP	141	59

SA12-200-01

Inlet	Outlet	Height	Width
1.5"	125	58	53
1"	148	74	72
1.5"	186	96	91
2"	214	114	150

SA12-001A-00

DN	SIZE
DN15	1/2"
DN20	3/4"
DN25	1
DN32	1 1/4"
DN40	1 1/2"
DN50	2"
DN65	2 1/2"
DN80	3"
DN100	4"



SA12-017A3-00A

DN	SIZE
DN25	1"

SA12-200-02

Inlet	Outlet	Height	Width
1"BSP	1"BSP	94	65

SA12-01C2-00

DN	SIZE
DN25	1
DN25	1
DN25	1



SA12-004A-00

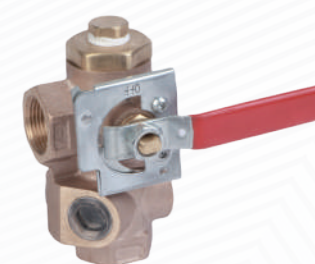
DN	SIZE
DN15	1/2"
DN20	3/4"
DN25	1
DN32	1 1/4"
DN40	1 1/2"
DN50	2"
DN65	2 1/2"
DN80	3"
DN100	4"

SA12-005A-00

DN	SIZE
DN15	1/2"
DN20	3/4"
DN25	1
DN32	1 1/4"
DN50	1 1/2"
DN65	2"
DN40	2 1/2"
DN80	3"
DN100	4"

SA12-025A-00

DN	SIZE
DN15	1/2"
DN20	3/4"
DN25	1
DN32	1 1/4"
DN40	1 1/2"
DN50	2"



SA12-200-19

Inlet	Outlet	Height	Width
1"BSP	3/4"BSP	138	70
1 1/4"NPT	3/4"BSP	141	94
2"NPT	3/4"BSP	163	127

SA12-052-00

Inlet	Outlet	Height	Width
Φ6.5+Φ3(1 "BSPT)	Φ6.5	---	---
Φ6.6(1 "BSPT)	Φ6.6	---	---
Φ6.5+Φ3(1 "BSPT)	Φ6.5	---	---
Φ5+Φ2(3/4 "BSPT)	Φ5	---	---
Φ4+Φ2(1/2 "BSPT)	Φ4	---	---



SA12-300-10

Inlet	Outlet	Height	Width
1.5"BSP	1"BSP	230	280
2.5"BSP	2"BSP	230	282
3"BSP	2.5"BSP	270	311



SA12-360-02

Size	Inlet	Outlet	Height	Width
DN50	G 2"	2"G1"	135	180
DN65	G 2.5"	2"G1.5"	250	200
DN65	2.5"NH	2*1.5"NH	250	200



SA12-100-11

Inlet	Outlet	Height	Width
3"BSP	2.5"Storz*2	260	270



SA12-300-05

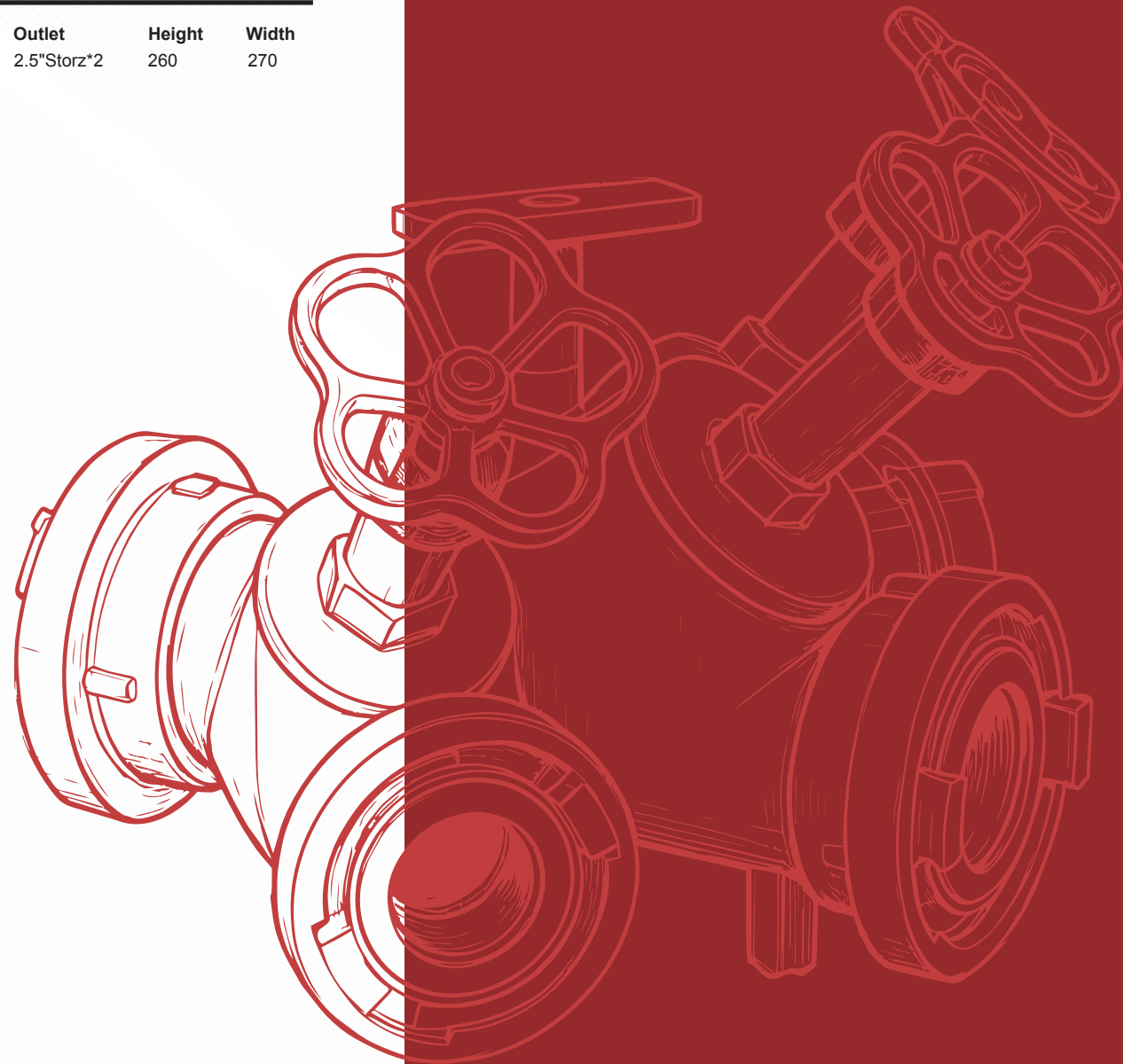
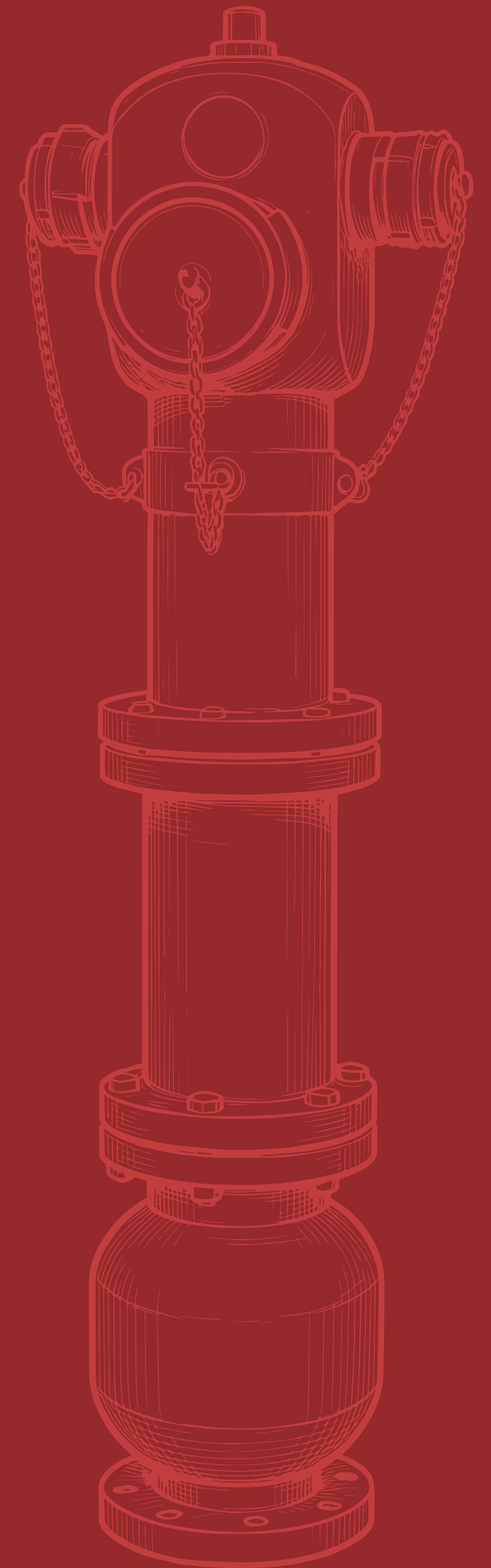
Inlet	Outlet	Height	Width
4"NPT	2.5"NH	175	257



SA12-365-02

Size	Inlet	Outlet	Height	Width
DN65	2.5"Storz	1*2.5"Storz-C	315	380
DN65	DSP65	1*DSP65	380	420
		2*Storz-C		
		2*DSP40		

# BREECHING INLETS





SA12-300-08

Inlet	Outlet	Height	Width
DN100 flange	BS336*2	275	295



SA12-002-00

Inlet	Outlet	Height	Width
4*2.5"BS336	150mm	---	---



SA12-002AV-00

<b>Body Material</b>	Ductile Iron
<b>Valve Type</b>	Oblique,Globe Pattern
<b>Inlet Connection</b>	4 * 2.5" Instantaneous BS 336
<b>Outlet Connection</b>	Flanged BS 4504-2
<b>Test Pressure</b>	20 BAR
<b>Flow Rate</b>	10 BAR
<b>Standards</b>	BS 5041-3(1975)
<b>Blank Cap</b>	Rubber with S/S Chain
<b>Weight</b>	31kg



SA12-131-00

Inlet	Outlet	Height	Width
2.5"BS336	2.5"BS336	---	---



SA12-052C-00

Inlet	Outlet	Height	Width
F1.5" BSP	2xF1 "BSP	---	---



SA12-054A-00

Inlet	Outlet	Height	Width
2.5"BSP	2x2"BSP+2.5"BSP	---	---



SA10-908-01

<b>Inlet</b>	DN100 Flange
<b>Outlet</b>	UNE 65*2    UNE 100
	DSP 65*2    AR 100
	2.5" Storz*2    4" Storz
<b>Height</b>	1190
<b>Width</b>	300



SA12-775-21

<b>Inlet</b>	DN100 Flange
<b>Outlet</b>	2.5" NH*2    4" NH
	2.5" Storz*2    4" Storz
	BS336*2    4" BSPT
<b>Height</b>	1620/2020
<b>Width</b>	410



SA12-785-21

<b>Inlet</b>	DN100 Flange
<b>Outlet</b>	2.5" NH*2    4" NH
	2.5" Storz*2    4" Storz
	BS336*2    4" BSPT
<b>Height</b>	1620/2020
<b>Width</b>	568



SA12-001A-00

Inlet	Outlet	Height	Width
100mm	2*2.5"BS336	---	---



SA12-004-00

Inlet	Outlet	Height	Width
100mm	2*Φ65mm	---	---



SA12-001E-00

Inlet	Outlet	Height	Width
100mm	2*2.5"BSP	---	---



SA12-001F-00

Inlet	Outlet	Height	Width
100mm	2*F 2.5"BSP	---	---



SA12-008A-00

Inlet	Outlet	Height	Width
100mm	2*DN65+DN100	---	---



SA12-003A-00

Inlet	Outlet	Height	Width
150mm	2*2.5"BS336+4"BSRT	---	---



SA12-008-00

Inlet	Outlet	Height	Width
100mm	2*DN65+DN100	---	---





SA12-011-00

Inlet	Outlet	Height	Width
2.5"	2*2"BSP (2"Storz)	---	---



SA12-012-00

Inlet	Outlet	Height	Width
2.5"	2*2.5"BS336	---	---



SA12-012A-00

Inlet	Outlet	Height	Width
2.5"	2.5"BS336	---	---



SA12-012D-00

Inlet	Outlet	Height	Width
2.5"	2.5"BS336	---	---



SA12-204-00

Model	PS8/20W	PS8/30W	PS8/40W
Flow Rate(L/S)	20	30	40
Rated W.P.(MPa)	0.8		
W.P.Range(MPa)	0.5-1.6		
Distance(m)	55	60	65
Angle Of Horizontal Rotation(9)	360		
Angle Of Vertical Rotation()	-60-+70		
Material	Aluminum Alloy/nozzle Stainless Steel		
Installation Mode	Seating Arrangement		
Service Environment	-10°C-+50°C		



SA12-205-00

Model	PS8/20W	PS8/30W
Flow Rate(L/S)	20	30
Rated W.P.(MPa)	0.8	
W.P.Range(MPa)	0.5-1.6	
Distance(m)	55	60
Angle Of Horizontal Rotation(9)	360	
Angle Of Vertical Rotation()	-60-+70	
Material	Aluminum Alloy/nozzle Stainless Steel	
Installation Mode	Seating Arrangement	
Service Environment	-10°C-+50°C	



SA12-206-00

Model	PL24	PL32	PL40	PL50	PL64
Flow Rate(L/S)	24	32	40	50	64
Rated W.P.(MPa)	1.2	1.2	1.2	1.6	1.6
W.P.Range(MPa)	0.5-1.6				
Distance(m)	55	60	65	70	75
Angle Of Horizontal Rotation(9)	360				
Angle Of Vertical Rotation()	-60-+70				
Material	Aluminum Alloy/Stainless Steel 304				
Installation Mode	DN100/Or customized				
Service Environment	-10°C-+50°C				



○ SA12-207-00

Model	PL24	PL32	PL40	PL48
Flow Rate(L/S)	24	32	40	48
Rated W.P.(MPa)	1.2	1.2	1.2	1.6
W.P.Range(MPa)	0.5-1.6			
Distance(m)	50	55	60	65
Angle Of Horizontal Rotation(°)	360			
Angle Of Vertical Rotation(°)	-60+70			
Material	Aluminum Alloy/Stainless Steel 304			
Installation Mode	DN100/Or customized			
Service Environment	-10°C-+50°C			



○ SA12-208-00

Model	PS8/20W	PS8/30W	PS8/40W	PS10/50W
Flow Rate(L/S)	20	30	40	50
Rated W.P.(MPa)	0.8	0.8	0.8	1.0
W.P.Range(MPa)	0.5-1.6			
Distance(m)	55	60	65	70
Angle Of Horizontal Rotation(°)	360			
Angle Of Vertical Rotation(°)	-60+70			
Material	Aluminum Alloy			
Installation Mode	DN100/Or customized			
Service Environment	-10°C-+50°C			



Product Number	SA12-020-00	SA12-020A-00	SA12-020B-00
Inlet	100 mm	100 mm	100 mm
Outlet	100 mm	2.5"LVT	2.5"BSRT



○ SA12-140-00-00J

Inlet	Outlet	IMPA
2.5"BS336	2.5"BS336	140L

○ SA12-120-00-00J

Inlet	Outlet	IMPA
2.5"BS336	2.5"BS336	120L





○ SA10-200-01 Rubber\_PU Lining

Type	C8	C10
Diameter	40,45,50,65,70	40,45,50,65,70,80,90
Work Pressure	0.8Mpa 116PSI	1.0Mpa 145PSI
Burst Pressure	>=2.4Mpa, >=348PSI	>=3.0Mpa, >=435PSI
Length Max (m)	100	100
	C13	C16
	40,45,50,65,70,80,100	40,45,50,65,70,80
	1.3Mpa 189PSI	1.6Mpa 232PSI
	>=3.9Mpa, >=566PSI	>=4.8Mpa, >=696PSI
	100	100



○ SA10-200-03 EN694 Approved PU Hose

Diameter	19	25
Work Pressure (Bar/PSI)	12 / 174	12 / 174
Test Pressure (Bar/PSI)	24 / 348	24 / 348
Burst Pressure (Bar/PSI)	42/609	42/609



○ SA10-200-04 EN694 Approved PVC Hose

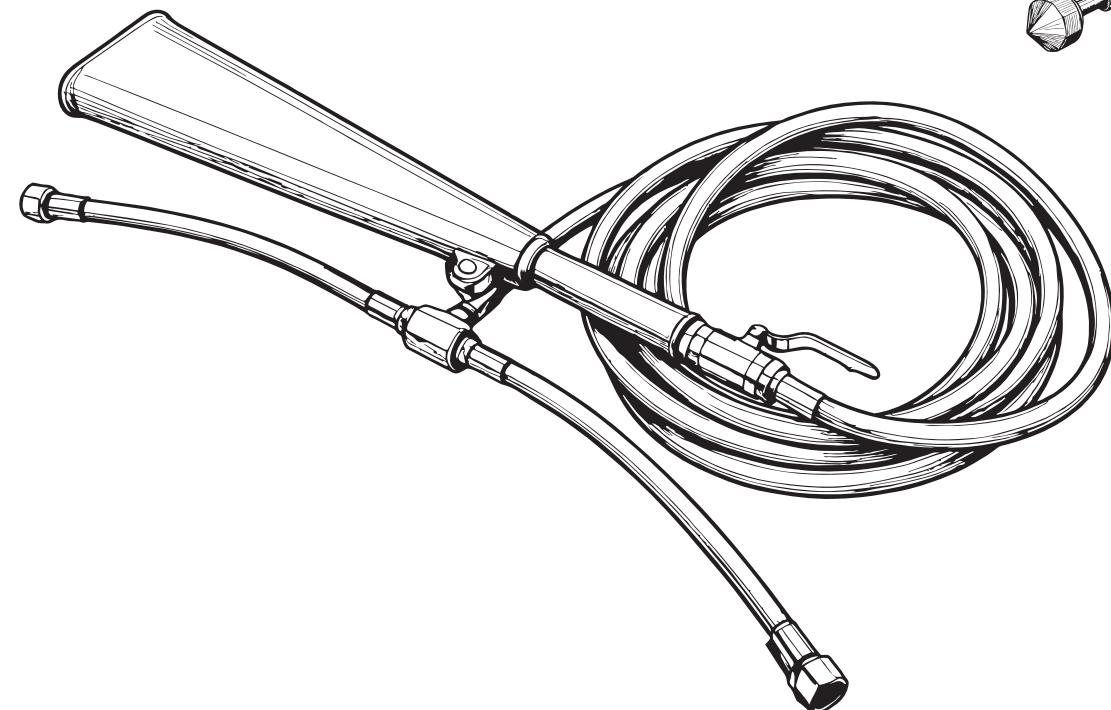
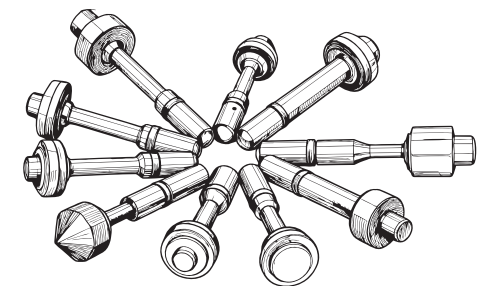
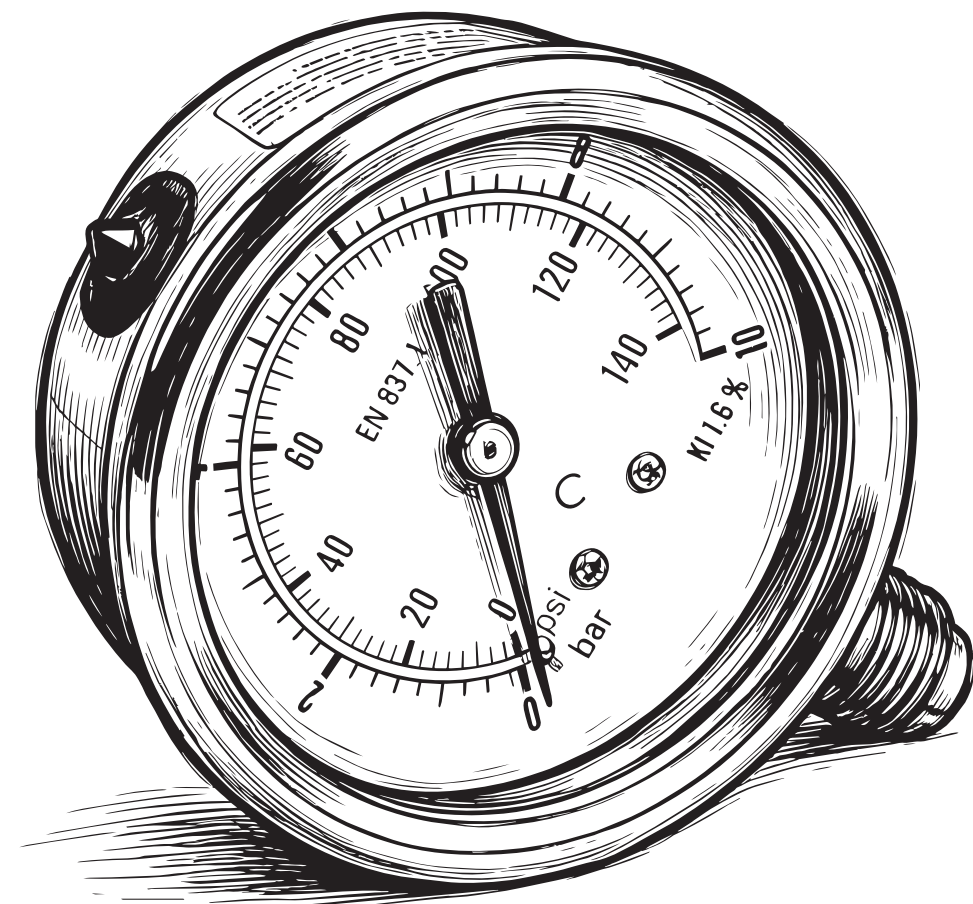
Diameter	19	25	33
Work Pressure (Bar/PSI)	12 / 174	12 / 174	7 / 101.5
Burst Pressure (Bar/PSI)	42 / 609	42 / 609	24.5 / 355
Temperature (°C)	-20~+60	-20~+60	-20~+60
Net Weight (g/m)	300	490	750
Packing Unit (m)	25 / 30	25 / 30	25 / 30



○ SA10-200-05 Double Jacket Hose

Diameter	40	50	65
Work Pressure (Bar/PSI)	25 / 360	25 / 360	25 / 360
Burst Pressure (Bar/PSI)	75 / 1088	75 / 1088	75 / 1088

# ACCE —SSORIES





Approval : EN3 AENOR

Indication Accuracy	7bar, 10bar, 12bar, 15bar, etc..
Diameter	φ23, φ 27, φ 35
Beginning of the green sector	±1 bar
Eng of the green sector	6%
Working pressure	±0.5 bar
Thread	M10*1

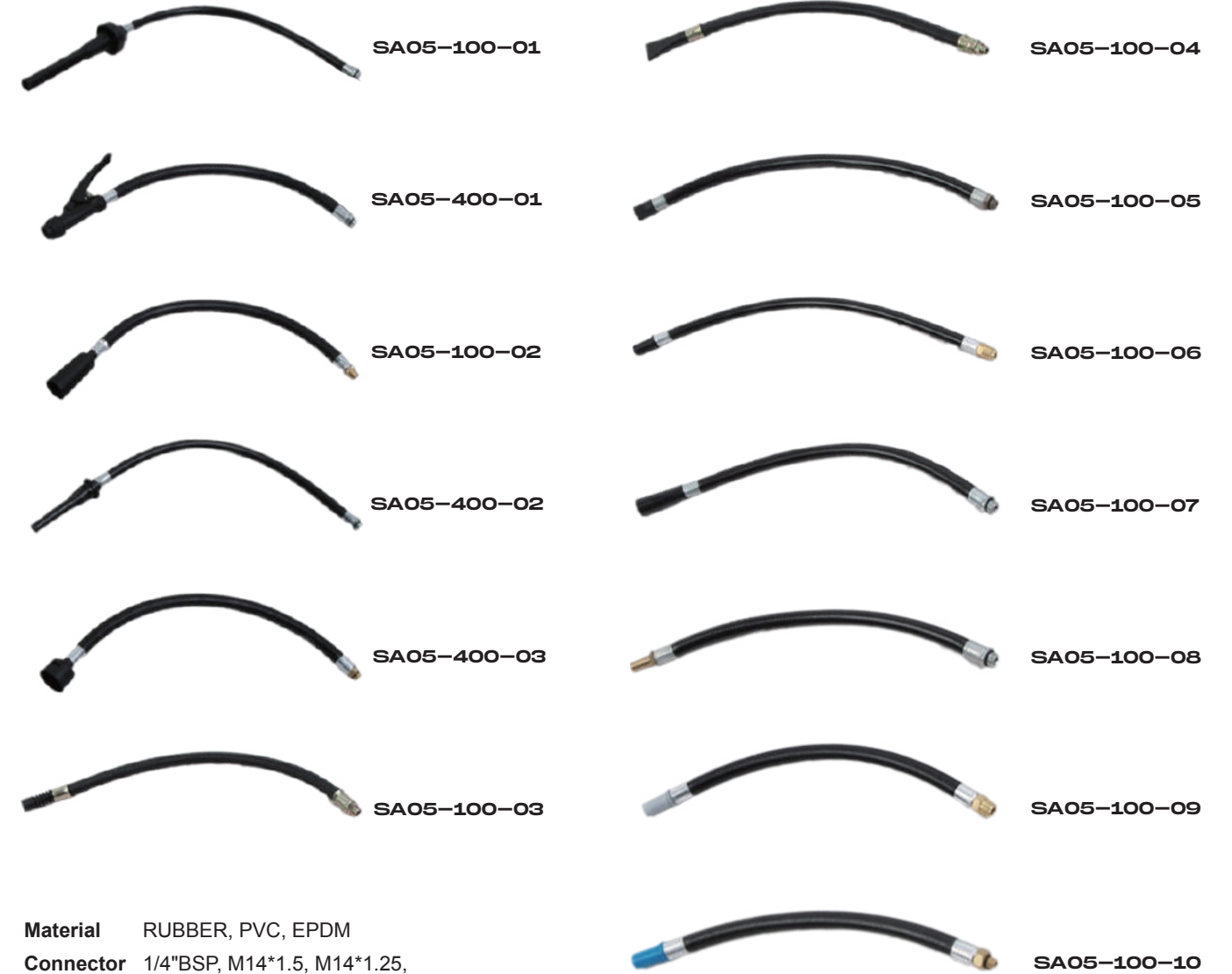


Approval : UL

Indication Accuracy	7bar, 10bar, 12bar, 15bar, etc..
Diameter	φ30, φ 37
Beginning of the green sector	±1 bar
Eng of the green sector	6%
Working pressure	±0.5 bar
Thread	M10*1



Indication Accuracy	
Pressure Range	~30-0 psi, 0~15 psi, 0~30 psi 0~60 psi, 0~15000 psi
Scale	Psi(1b/in2), bar, Kpa, kgs/cm2, Mpa, Hg
Accuracy	3%, 2%, 3%, 1.6%, 1%
Connection Thread	1/8", 1/4", 3/8", 1/2", 5/8", 7/8", NPT, BSP, NSPT, PT or ZG



**Material** RUBBER, PVC, EPDM  
**Connector Thread** 1/4"BSP, M14\*1.5, M14\*1.25, M16\*1.5, etc.  
**Length** According Requirement





SA05-201-03



SA05-201-01



SA05-203-02  
SA05-203-05



SA05-201-08



SA05-201-02



SA05-201-04  
SA05-201-05



SA05-203-04  
SA05-203-03  
SA05-203-08



SA05-202-90



SA05-704-01



SA05-704-02



SA06-200



SA06-100



SA06-500



SA06-301



SA06-300

**Material** PVC, PE, Aluminum, Steel, Brass, Stainless  
**Thread** M10\*1, M16\*1.5, M22\*1.5, 1/4"BSP  
**Length** According Requirement



SA07-130-01

**Thread** M30\*1.5  
**Height (mm)** 15



SA07-130-02

**Thread** M30\*1.5  
**Height (mm)** 12.5



SA07-124-01

**Thread** M24\*1.5  
**Height (mm)** 22



SA07-130-03

**Thread** M30\*1.5  
**Height (mm)** 22



SA07-130-04

**Thread** M30\*1.5  
**Height (mm)** 22



SA07-150-01

**Thread** 2"BSP  
**Height (mm)** 29



SA07-160-01

**Thread** M74\*2  
**Height (mm)** 25



SA08-110-01



SA08-101-04



SA08-105-04



SA08-101-03



SA08-104-01



SA08-105-06



SA08-103-01



SA08-105-03



SA08-101-01



SA08-100-01



SA08-105-02



SA08-105-01



SA08-205-07



SA08-205-03



SA08-205-01



SA08-205-05



SA08-205-02



SA08-910-001



SA08-501-105



SA08-216-01



SA08-213-01



SA08-220-01



SA08-251-10



SA08-910-001



SA13-403-01

Size 830\*310\*263  
Material PVC  
Suit for 1set 9~12kg powder or 5kg CO2 extinguisher



SA13-403-02

Size 700\*300\*253  
Material PVC  
Suit for 1set 4~6kg powder or 2~3kg CO2 extinguisher



SA13-403-03

Size 670\*300\*230  
Material PVC  
Suit for 1set 6kg powder or 2~3kg CO2 extinguisher



SA13-403-04

Size 715\*540\*270  
Material PVC  
Suit for 2set 6kg powder or 2kg CO2 extinguisher



	SA13-300-01	SA13-300-02	SA13-300-03	SA13-300-04	SA13-300-05
Specification	0.9*0.9m	1.0*1.0m	1.2*1.2m	1.2*1.8m	1.8*1.8m
Packing	Nylon Bag / PVC Box / Bucket				
Temperature	550°C / 700°C / 1100°C / 1700°C				



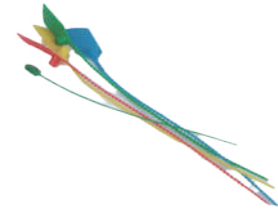
**Stems**  
SA17-200-01  
  
Material  
brass  
stainless steel



**Safety Pin**  
SA17-400-01  
  
Material  
stainless steel



**Safety Pin**  
SA17-501-01  
  
Material  
PVC



**Safety Seal**  
SA17-502-02  
  
Material  
PVC



**Valve Cap**  
SA08-701-01  
  
Size  
2-3/4"BSP



**Cylinder Base**  
SA08-401-01  
  
Size  
φ140, φ162  
φ182, φ184



**Cylinder Base**  
SA08-402-01  
  
Size  
φ150



**Cylinder Base**  
SA08-403-01  
  
Size  
φ150, φ160  
φ180



**Cylinder Base**  
SA08-404-01  
  
Size  
φ150



**Seat**  
SA13-410-01



**Cover**  
SA13-406-00  
  
Material  
PVC  
Nylon



**Trolley**  
SA13-405-02



**Helmet**  
SA14-100-00



**Vest**  
SA14-102-00



**Bucket**  
SA13-400-03  
  
Material  
PVC



**Bucket**  
SA13-403-00  
  
Material  
Carbon Steel



**Warning Triangle**  
SA14-203-00



**Hammer**  
SA14-201-00



SA18-302-02



SA10-806-02



SA13-404-01



SA13-806-01



13-806-04



SA13-400-21



SA13-400-16  
Inlet 2" 3" 333428



SA13-400-19



SA13-400-16A  
Inlet 4" 5" 333430



SA13-400-22



SA13-400-23



SA13-078-00 330791  
SA13-078A-00 330792  
SA13-078B-00 330793  
Inlet 1.5" 2" 2.5"



SA13-400-24



SA13-400-20



SA13-400-11



SA13-400-09



SA13-400-10



SA13-400-12



SA13-0100-78



SA13-101-78



SA13-085-00(1.5"330795)  
SA13-085A-00(2.5"330796)



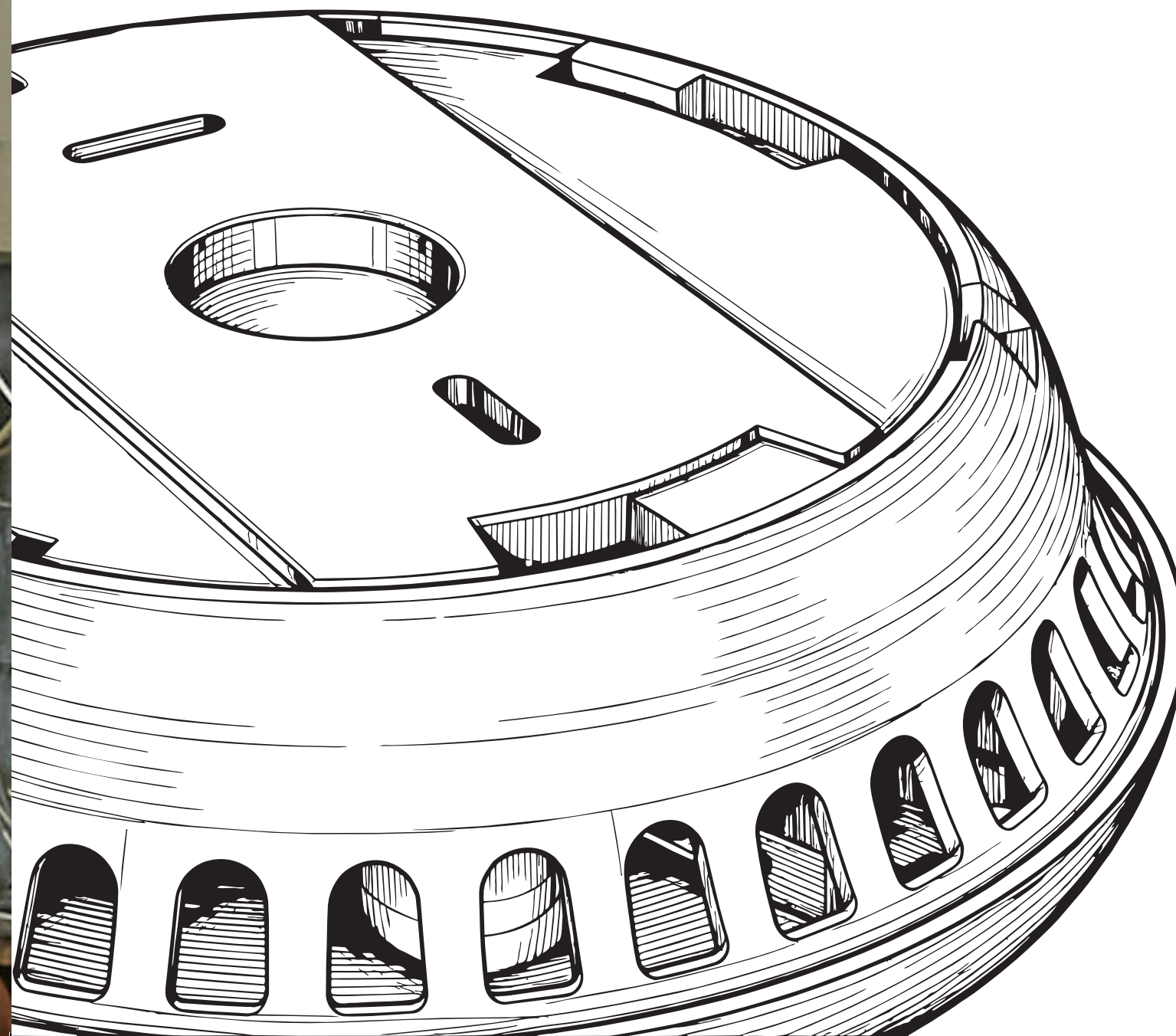
SA13-400-17



SA13-087B-78



# OTHER PRODUCTS





### SA13-200-02

Power Source	DC 3V battery
Quiescent Current	< 4uA
Alarm Sensitivity	0.1233-0.1702dB/m.
Comply with standard	EN14604:2005/AC:2008
Alarm Current	< 80mA
Alarm Volume	>85dB(A) @ 3 meters.
Low Voltage Threshold	DC 2.65-2.75V
Hush Time	10minutes
Battery Service Life	Ten years
Humidity Range	< 95% relative humidity (RH)
Temperature Range	0°C to 40°C
Sound Pattern	ISO8201 (BI 0.5s - pause 0.5s - BI 0.5s - pause 0.5s - BI 0.5s - pause 1.5s, with the RED LED flash, repeat this alarm pattern)
Size	100mm in diameter * 33.8mm depth



### SA13-200-03

VdS, Q- label, NF, LPCB , BOSEC, ACTIVFIRE,UL approval
Non replaceable (built-in) 3V lithium battery
Conforms to AS3786: 2014 standard
10 years long life time
Flash alarm indicator (red)
Photoelectric chamber for easily detect
Big test button for easy testing operation
Loud>85dB(A)alarm signal @3M
Low battery detection / warning
Fault warning
Easy to install with mounting bracket
Silence function
Hush time : 10 minutes
Sound Pattern
Size: Ø100*35.1MM

### SA13-200-04

Approval	Vds3131, Vds3515, AS3786:2014 Approval
Battery Specifications	Built-in DC3V Lithium battery
RF Frequency	868/433MHz ± 50KHz
RF Distance	> 100 meters
Alarm Volume	>85dB(A) @ 3 meters
Battery Service Life	>10 years
Hush Time	10 minutes ±10%
Size	Ø114mm * 38mm
	• 10 hours anti-disturb design when low battery status
	• Ø114mm * 38mm



### SA13-400-01 Water Alarm

Power	DC 3V lithium battery
	Loud>85dB(A)alarm signal @1M
Operating Temperature	4°C ~ 50°C
Standby Current	<3uA
Waterproof Grade	IP65



### SA13-400-02 Water Alarm

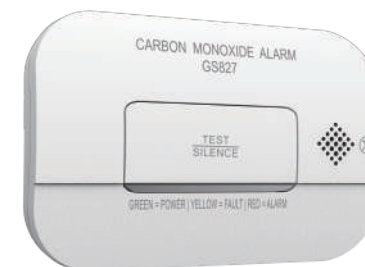
Power	DC2*1.5V Alkaline AA battery
Standby Current	<5uA
Alarm Sensitivity	2MΩ
Alarm Volume	>85dB(A) @ 1 meters
Waterproof Grade	IP65



### SA13-410-01 CO Detector

BSI Kitemark
Conforms to EN 50291- 1:2010 A1:2012
7 years after initial power up
DC 3V (2pcs AA alkaline battery)
Loud>85dB(A)alarm signal @1M

Sensor Type	electrochemical
Sensitivity Setting	conforms to EN50291 standard
Operation Ambient Condition	-10 ~+40°C , 30 ~ 95%R.H



## Bulkhead Series

## ○ SA13-413-01



## Description

SMD LED technology  
Easy installation and maintenance  
Perfect replacement for T5 8W  
Supplied with a legend panels to create a double-sided exit sign.

Test button available  
Ideal for use in corridors exits and escape routes  
24 hours charge time  
Self test option available



## ○ SA13-413-02



## Description

New compact design  
SMD LED technology  
Easy installation and maintenance  
IP65 Exit diffuser available

Test button available  
24 hours charge time  
Self test option available



## ○ SA13-413-03

## Description

24 hours charging time  
Ideal for use in corridors, exits and escape routes (A805) Fully recessed mounting (A803/B803)  
Drop exit legend available (B803)

Test button available  
Cut out size: 388\*135mm  
Self test option available



## ○ SA13-413-04



## Specification

20 pcs SMD LED  
Lumen output: 300lm  
3.6V 1800mAh Ni-Cd battery  
Wattage: 6W  
3 hours emergency duration

24 hours charge time  
Easy installation and maintenance  
Test button available  
Ideal for use in corridors exits and escape routes  
Self test option available



## ○ SA13-413-05

## Specification

8pcs SMD LED  
Lumen : 150lm  
Battery : 3.6V 600mAh Ni-Cd  
Wattage: 2W  
Duration : 3 hours

24 hours charge time  
Easy installation and maintenance  
Recessed available



## ○ SA13-413-06



## Specification

8pcs SMD LED  
Lumen : 110lm  
Battery : 3.6V 900mAh Ni-Cd  
Wattage: 2W

Duration : 3 hours  
24 hours charge time  
Easy installation and maintenance  
Test button



## ○ SA13-413-07 (High Power Bulkhead)



## Description

High power LED  
Exit legend sticker available  
Easy installation and maintenance  
Test button available

24 hours charge time  
Self test option available





### SA13-402-01

#### Specification

16pcs SMD2835 LED lamp  
3.6V 900mAh Ni-Cd battery  
LiFePO4 battery available  
Duration : 3 hours  
Laser printing technology

Easy installation and maintenance  
Polycarbonate body PMMA acrylic legend  
24 hours charge time  
Self test option available



### SA13-402-02

#### Description

20pcs SMD LED  
3.6V 1500mAh Ni-Cd battery  
LiFePO4 battery available  
3 hours emergency duration  
24 hours charging time

Metal box with polycarbonate legend panel  
chrome & brass & black housing available  
Changeable legend  
Self test option available



### SA13-402-03

#### Description

20pcs SMD LED  
3.6V 1500mAh Ni-Cd battery  
LiFePO4 battery available  
3 hours emergency duration

24 hours charging time  
Easy installation and maintenance  
Changeable legend  
Self test option available



### SA13-402-04

#### Description

24pcs SMD2835 LED lamp  
3.6V 1200mAh Ni-Cd battery  
3 hours emergency duration  
24 hours charging time

Slim design  
Extra LED for escape route  
Changeable legend  
Self test option available



### SA13-402-05



#### Description

16pcs SMD2835 LED lamp  
3.6V 1200mAh Ni-Cd battery  
3 hours emergency duration  
24 hours charging time  
Slim design

Extra LED for escape route  
Changeable legend  
Self test option available



### SA13-402-06



#### Description

8pcs SMD LED  
4.8V 600mAh Ni-Cd battery  
LiFePO4 battery available  
3 hours emergency duration  
24hours charging time

Changeable legend  
Double sided available  
Self test option available



### SA13-402-07



#### Description

20pcs SMD led  
3.6V 1500mAh Ni-cd battery  
LiFePO4 battery available  
3 hours emergency duration

24hours charging time  
Recessed mount available  
Test button  
Self test option available



### SA13-402-08



#### Description

13pcs SMD2835 LED lamp  
3.6V 600mAh Ni-cd battery  
LiFePO4 battery available  
3 hours emergency duration

24hours charging time  
Polycarbonate body PMMA acrylic legend  
Available for track exit



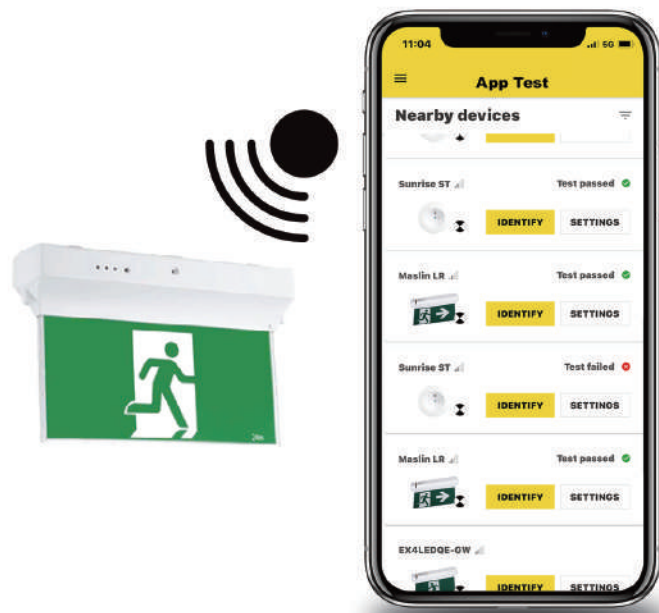
### SA13-402-09

#### Description

16pcs SMD2835 LED lamp  
3.6V 600mAh Ni-cd battery  
3 hours emergency duration  
24hours charging time  
Wall and ceiling mounted

Changeable PVC legend  
Self test option available

# THE FUTURE OF TESTING IS HERE...



Autonomous and periodic self-testing will have detailed results prior to your next visit for unparalleled **accuracy, convenience and time saving.**

**No set up required.** Simply install the Elumen APP and you're ready for **hands free testing** immediately. No more need for test buttons or drop tests! Your results will be waiting for you once you reach the site.

With high quality construction, lithium battery and adjustable LED lights, coupled with a **5 year warranty**, Elumen ST will provide years of cost-saving testing results, all at the touch of your smartphone.

**Compliant with AS2293**, Elumen ST is a convenient way to bring a building up to compliance where no separate emergency circuit is installed. This also means you never need to power down a site to test their lights, saving you and your client precious time and servicing costs.

**Build your smart building network!** The new Elumen App Test Smoke Alarm will seamlessly become part of an existing Elumen EEL network making testing even easier, **more accurate and timely than ever before!**



## Download the App!



# DISCOVER THE BENEFITS OF REMOTE TESTING!

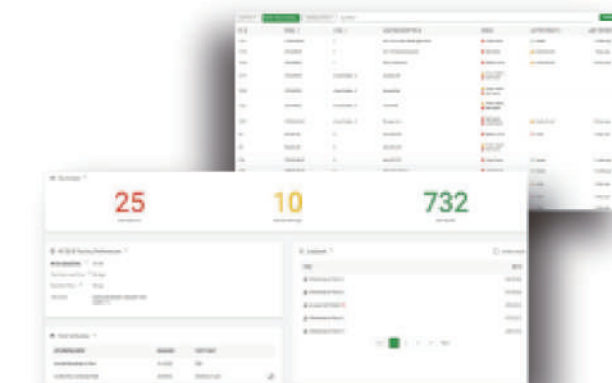
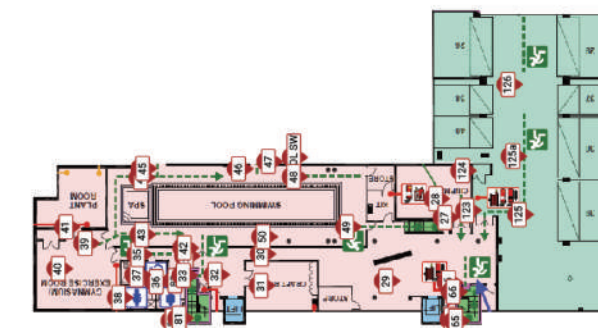
Harness the most **efficient, accurate and transparent** way of testing emergency lighting available! Offering an unparalleled level of data and time saving across a high-quality range of fittings that benefit from a 5-year warranty.

Utilising **dual-band mesh technology**, the Network range of Elumen lighting offer users the most reliable and effective communication between site and office!



**Live updates** pushed to your phone or computer communicating vital data such as power outages, and other anomalies. This means integrating other sensitive devices, such as temperature gauges and smoke alarms, will strengthen your service to your client-base.

Nothing comes close to the level of details and vivid experience that EMIOT can offer! Experience a **masterful 3-D floor plan** that is unlike anything else.



Live data allows insight into sites with restricted or difficult access, such as 24 hour operations, large sites with multiple buildings and levels or sites that are sensitive/secure.

## CONNECT MORE DEVICES...





# Stainless Steel Pipe Fittings

Double compression / Ring compression available in various sizes and types from DN15-DN100



45° V-coupling type A



Straight coupling



Adjustable couplings



Reducing straight coupling



Straight coupling with female thread nut



Reducing V-coupling 90°



90° V-coupling type A



90° V-coupling type B



V-coupling with female thread nut



T coupling



V-coupling with male thread



Straight cross



T-coupling with female thread nut

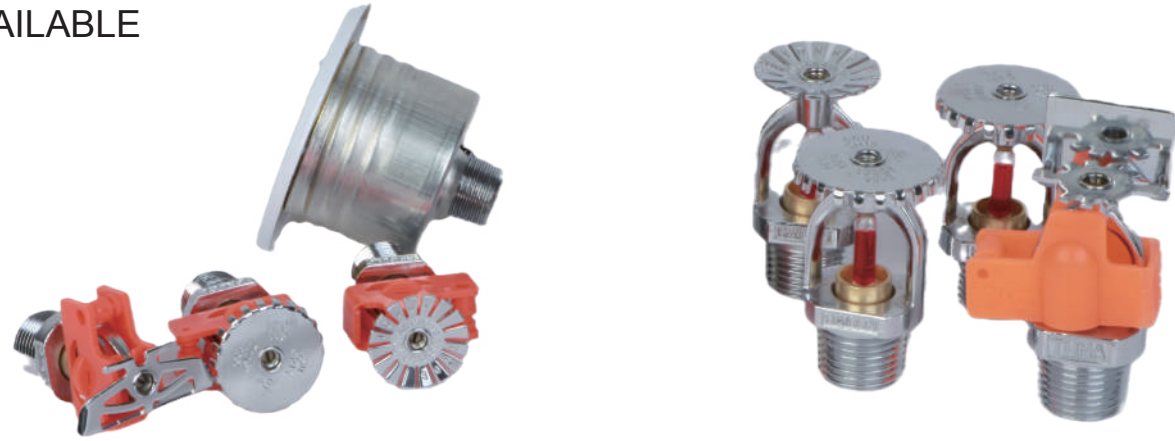


Straight coupling adjustable



Cap

UL AVAILABLE



Code	SA13-150-01	SA13-160-01	SA13-150-02	SA13-160-02
Type	NX003	NX004	NX005	NX006
Fixing Mode	Upright Type		Pendant Type	
Response Mode and Diameter of Glass Bulb	Standard Response φ5mm	Quick Response φ3mm	Standard Response φ5mm	Quick Response φ3mm
Temp. Rating Max. Ambient Temp. Allowed Glass bulb Color	135 °F / 57°C 115 °F / 46°C Orange		155 °F / 68°C 135 °F / 57°C Red	
Thread Size	R 1/2 or NPT 1/2			
Nominal Orifice Size	1/2 Inch			
Nominal K-Factor	5.6(U.S.)/80(metric)			
Max. Working Pressure	1.2MPa(12Bar) / 175 psig			
Minimum Operation Pressure	0.048MPa(0.48Bar)/ 7 psig			
Cover Plate Finish	Painted White or Chrome Plated of Color Coated In Any Color			

Code	SA13-150-03	SA13-160-03	SA13-150-04	SA13-160-04
Type	NX001	NX002	NX007	NX008
Fixing Mode	Sidewall Type		Concealed Pendant Type	
Response Mode and Diameter of Glass Bulb	Standard Response φ5mm	Quick Response φ3mm	Standard Response φ5mm	Quick Response φ3mm
Temp. Rating Max. Ambient Temp. Allowed Glass bulb Color	175 °F / 79°C 155 °F / 68°C Yellow		200 °F / 93°C 180 °F / 82°C Green	
Thread Size	R 1/2 or NPT 1/2			
Nominal Orifice Size	1/2 Inch			
Nominal K-Factor	5.6(U.S.)/80(metric)			
Max. Working Pressure	1.2MPa(12Bar) / 175 psig			
Minimum Operation Pressure	0.048MPa(0.48Bar)/ 7 psig			
Cover Plate Finish	Painted White or Chrome Plated of Color Coated In Any Color			



SA13-400-02



SA13-400-02A



SA13-400-06



SA13-400-08

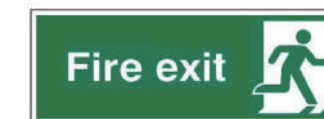


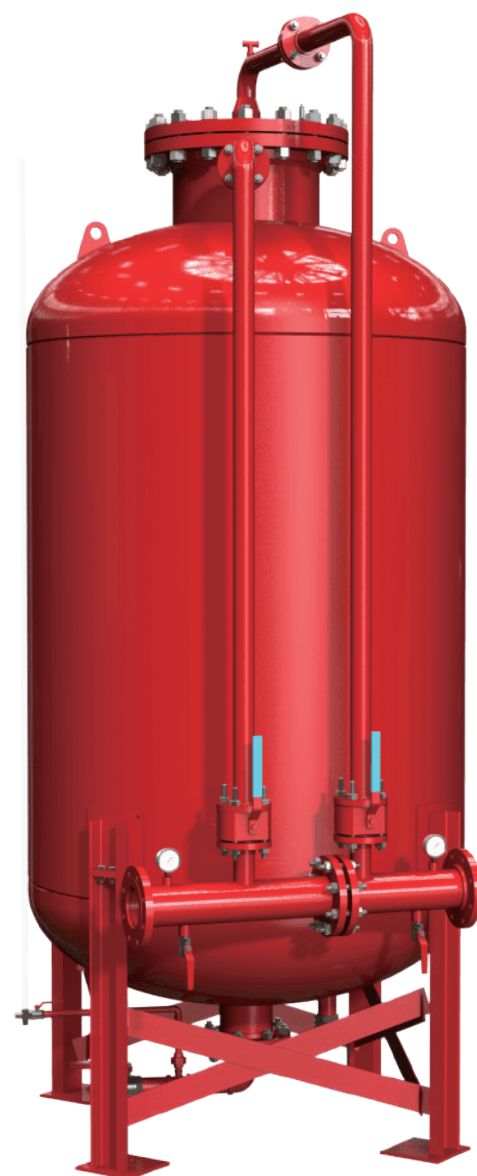
SA13-400-02B



SA13-400-07

Different sizes and materials available





### SA16-500-01

Volume	100L	200L	250L	300L	500L
	750L	1000L	2500L	5000L	10000L

**Foam extinguishing system** has features of safe, reliable economic, practical and high extinguishing efficiency. It is applicable to the extinguishments of fire in class A and B, with superiority in the extinguishments of fire in class B.

**Low-power foam extinguishing system** is applicable extinguishments of fire caused by flammable or combustible liquid container or large area floating fire. It is mainly used in the production, storage, transportation and application places of flammable and combustible liquid, such as petrochemical enterprise, oil depot, loading and unloading platform, wharf oil extraction platform hanger, garage and other places with high dangers.

**High-power foam extinguishing system** has the features of high foaming times, small loss of water stain, high anti-reburning capacity and low cost. It is used to extinguish fire in class A and B inundation and coverage. It can also be used to effectively control floating fire caused by liquefied petroleum gas and liquefied natural gas. It is mainly used in solid materials warehouse, flammable liquid warehouse industrial house (or workshop) with fire danger, underground building works, the engine room and pumproom of ships and vessels, places storing precious instruments and materials as well as places with the danger of floating fire caused by flammable and combustible liquid and liquefied petroleum gas and liquefied natural gas.

## Fire Fighting Agents



Foam / Additives



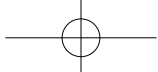
Powder



HFC 227ea Gas



FK5112



[www.saintsea.com](http://www.saintsea.com)

**Global Sales Center**

No.1-305, United Plaza, No.58, Qianjiang Road,  
Hangzhou, Zhejiang, China.  
PC : 310008

**T** : 0086 - (0)571 - 85772095  
**F** : 0086 - (0)571 - 85772196

**E** : [sales@saintsea.com](mailto:sales@saintsea.com)  
[saintseagroup@gmail.com](mailto:saintseagroup@gmail.com)

Version 2026

**Manufacturing Center**

Tianhua Industrial District, Langxia Street Scene,  
Yuyao City, Zhejiang Province, China.  
PC : 315480

